

Trigger Deadline based on specific Date value

This article shows on how one can set up a Deadline that will be triggered on a specific date value set in a Form.

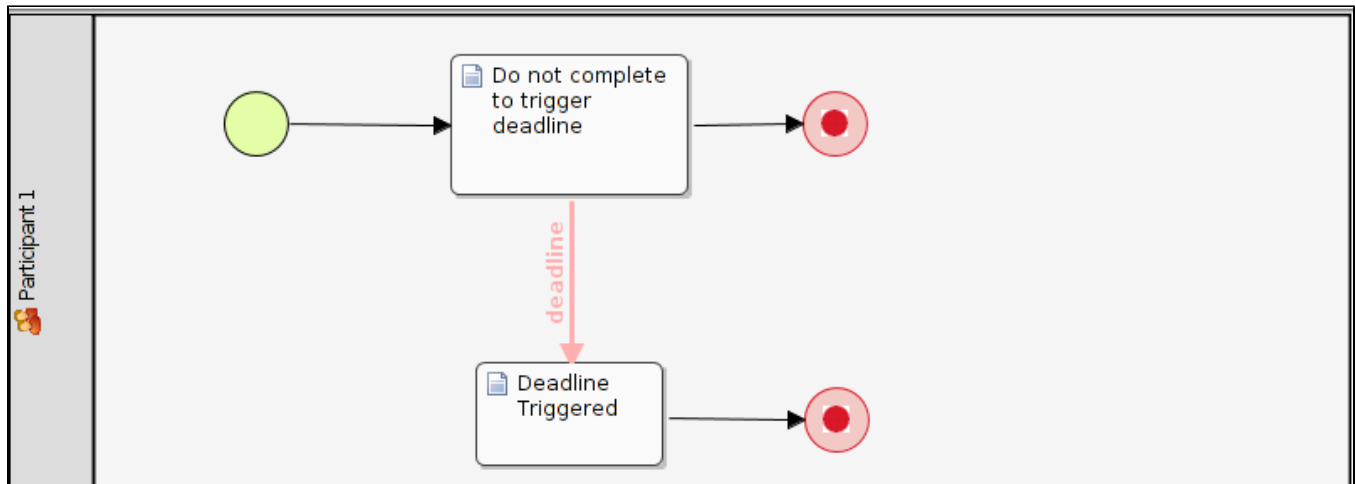


Figure 1: Workflow Design with an activity "Deadline Triggered" that will be invoked when the Deadline is triggered

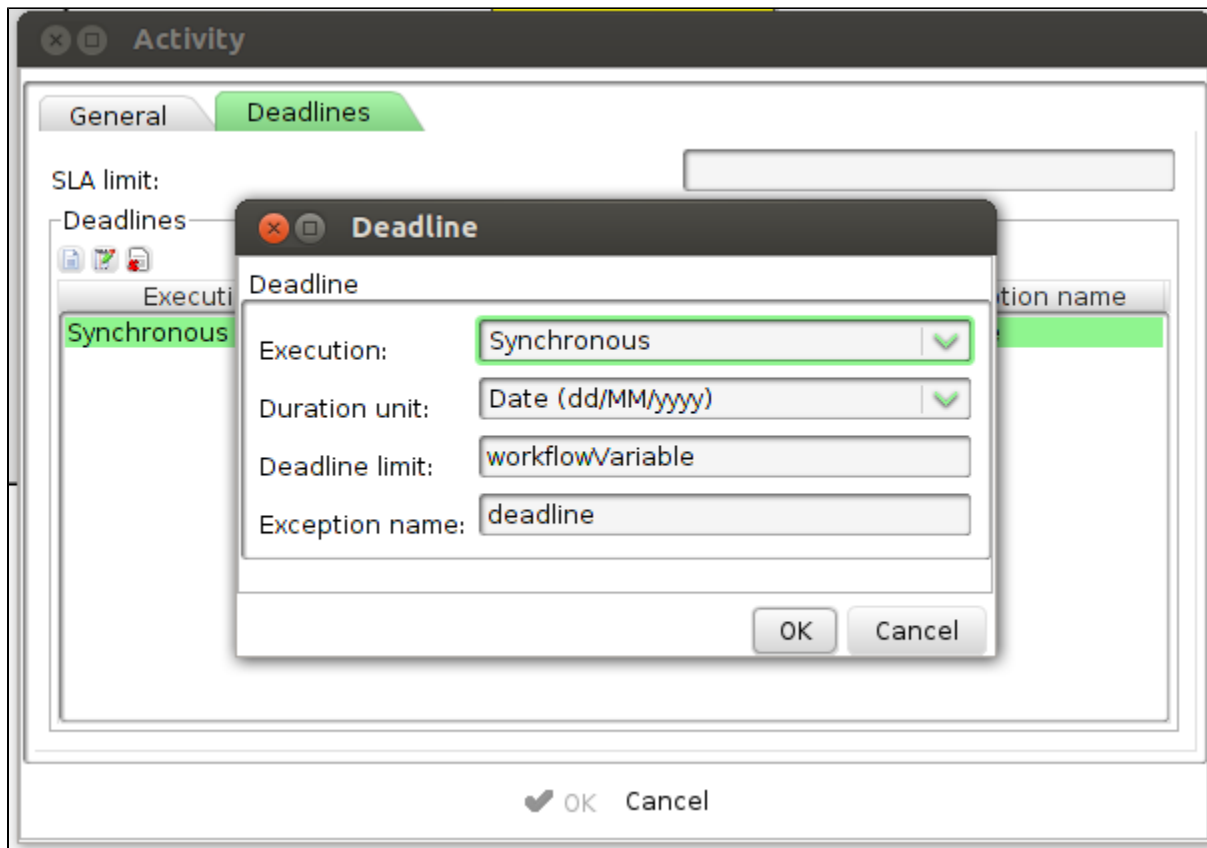
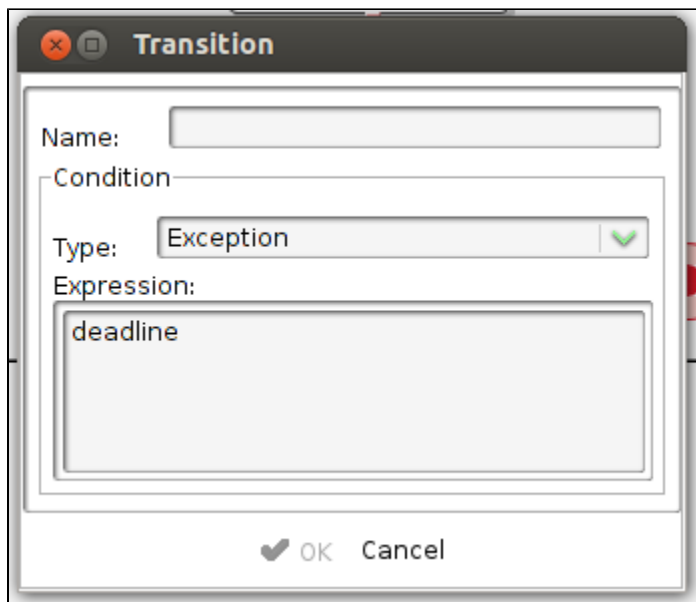


Figure 2: Setting up the Deadline parameter

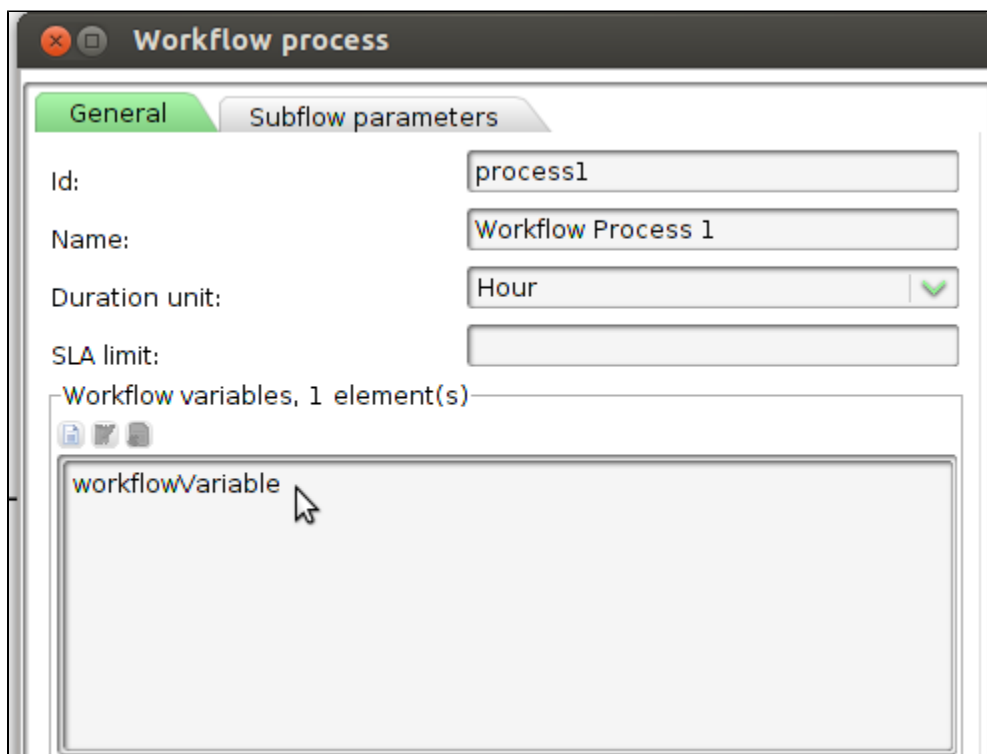
Edit the first activity, "Do not complete to trigger deadline" to add a Deadline as shown in the figure above. Set the "Duration unit" to "Date (dd/MM/yyyy)" and "Deadline limit" to the name of Workflow Variable. In this example, the Workflow Variable is named as "workflowVariable".



The image shows a 'Transition' dialog box with a title bar containing a close button (red X) and a maximize button (square). The dialog has a 'Name' field at the top. Below it is a 'Condition' section with a 'Type' dropdown menu set to 'Exception' (indicated by a green checkmark) and an 'Expression' text area containing the word 'deadline'. At the bottom are 'OK' and 'Cancel' buttons, with a small green checkmark icon to the left of the 'OK' button.

Figure 3: Setting up the Transition as Exception

On the transition leading out of the first activity, edit its properties by matching the Exception name of the Deadline set earlier with the "Expression" field.



The image shows a 'Workflow process' dialog box with a title bar containing a close button (red X) and a maximize button (square). It has two tabs: 'General' (selected) and 'Subflow parameters'. Under the 'General' tab, there are fields for 'Id' (containing 'process1'), 'Name' (containing 'Workflow Process 1'), 'Duration unit' (dropdown set to 'Hour' with a green checkmark), and 'SLA limit' (empty). Below these is a section titled 'Workflow variables, 1 element(s)' with a list icon, a trash icon, and a plus icon. A list box contains the text 'workflowVariable', with a mouse cursor hovering over it.

Figure 4: Create a Workflow Variable in the process's properties

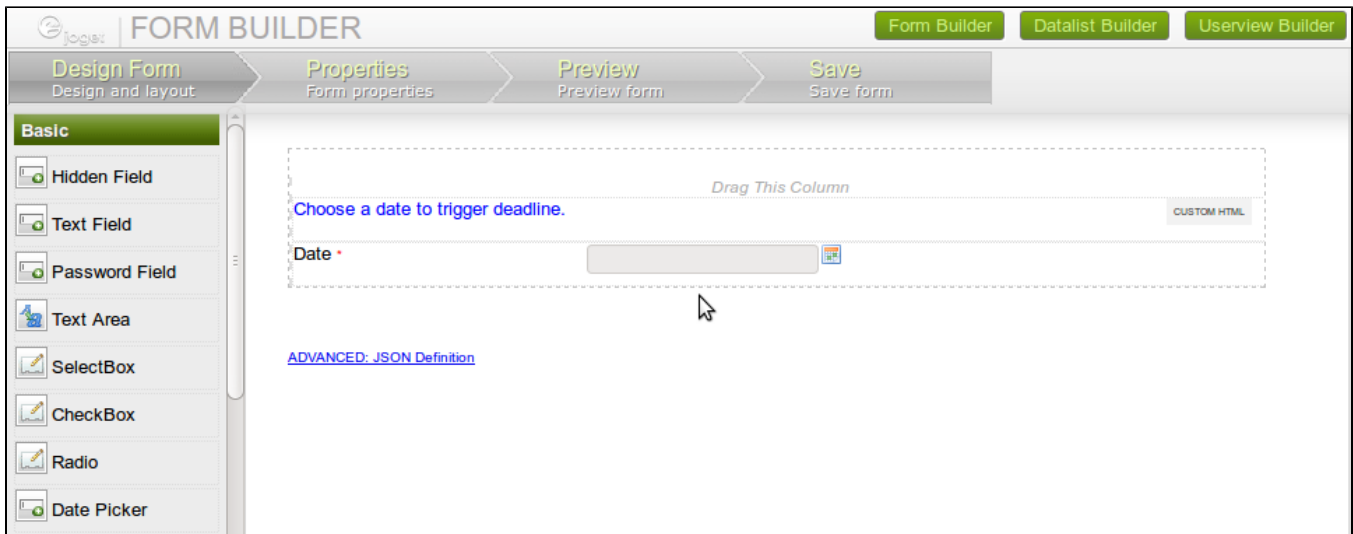


Figure 5: Create a Form with a Date Picker element to set a date value to workflow variable.

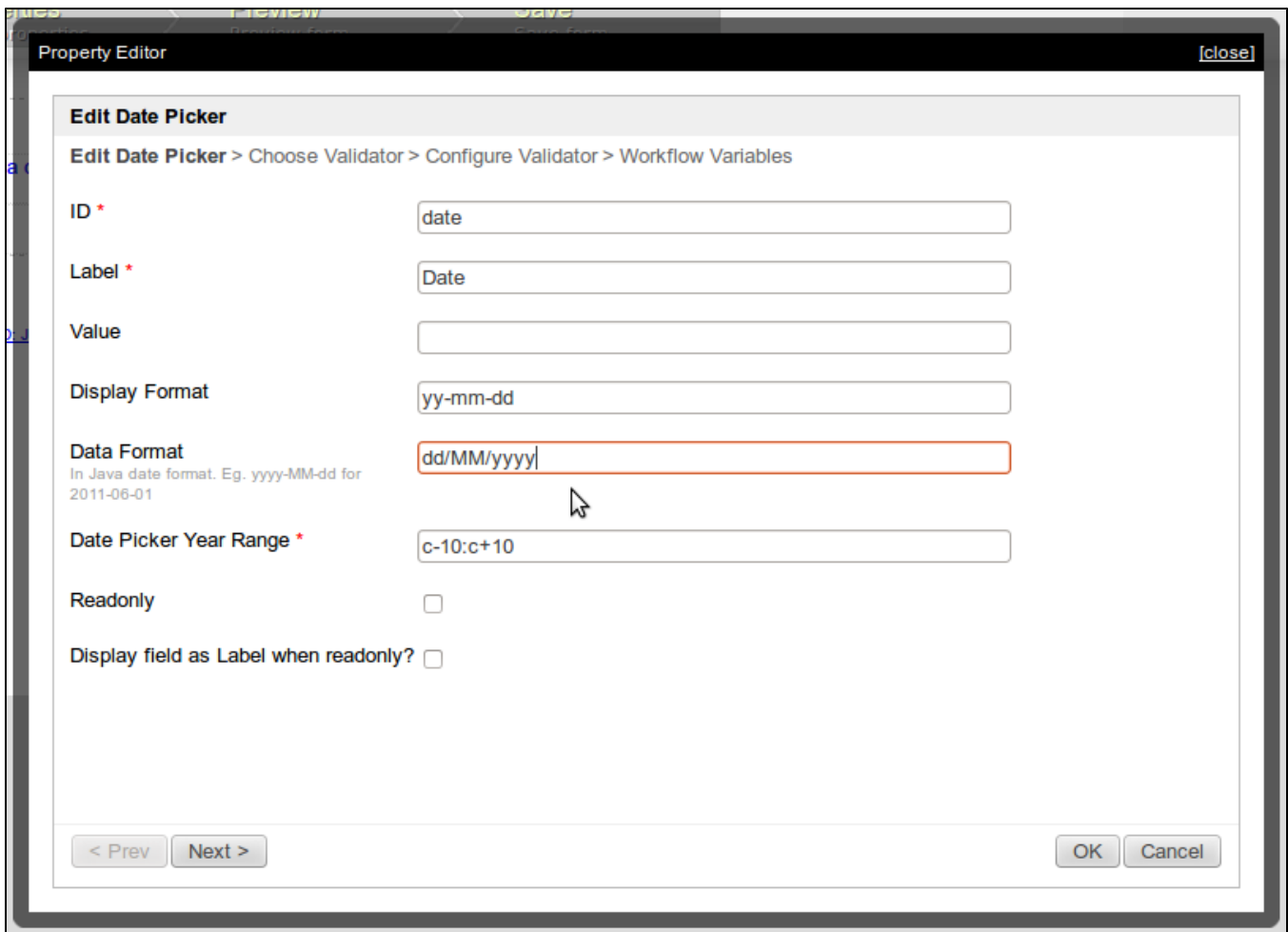


Figure 6: Edit the date picker's properties and set "Data Format" to "dd/MM/yyyy"

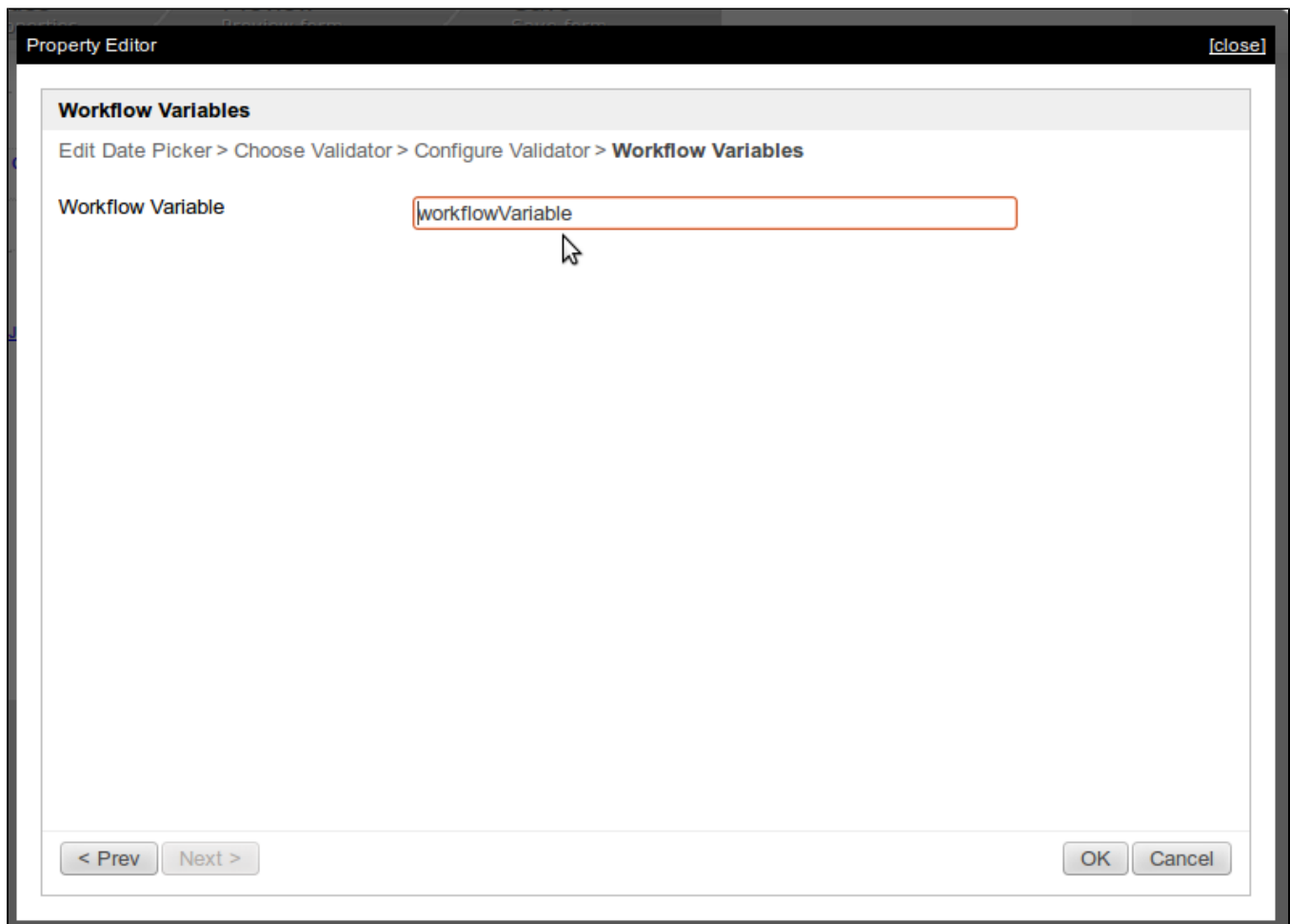


Figure 7: Map the Date Picker's value to the Workflow Variable

Important Note:

1. The value of "workflowVariable" can be changed/manipulated as many times as needed to reflect the use case of your process design so long that the deadline has NOT been executed before.

Sample App:

[APP_deadline_sample-1-20130619113323.zip](#)

Related Articles