

Configure for MS SQL Server 2012

Follow the instructions up to **Step 2**, as documented in [Configure for MS SQL Server 2005](#). Then, we will need to enable the listener port necessary for Joget to establish a connection to.

Step 3: Enabling TCP/IP on Microsoft SQL Server 2012

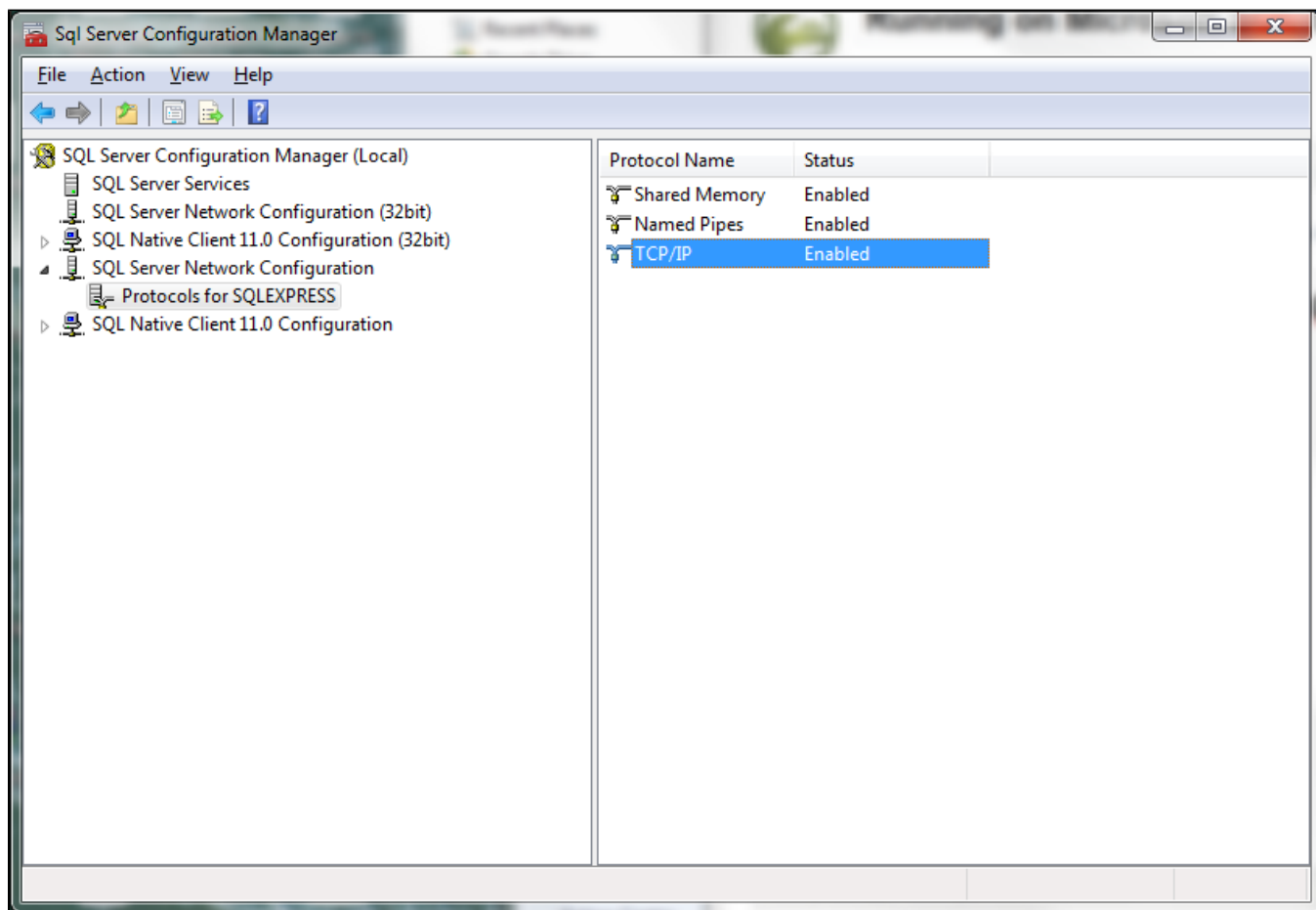


Figure 1: Sql Server Configuration Manager

1. Enable named pipes and TCP/IP.
2. Open up TCP/IP Properties.

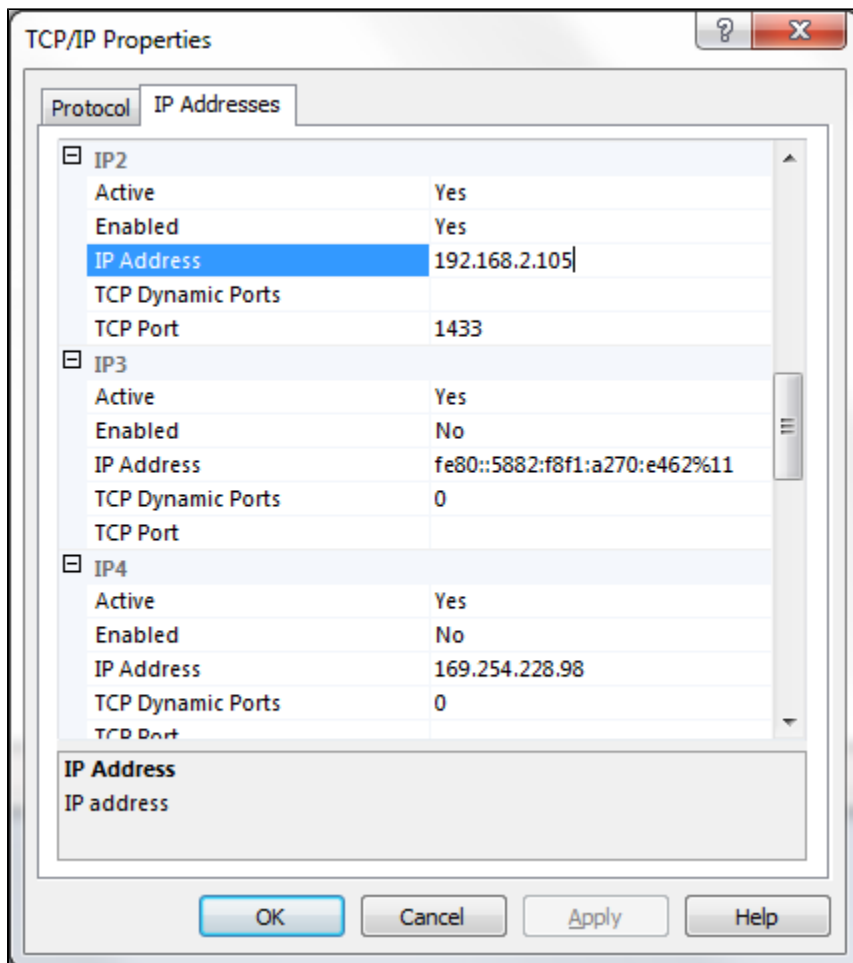


Figure 2: IP2 - TCP/IP Properties Under Protocols for SQLEXPRESS

1. Right-click on TCP/IP and select **Properties**.
2. Go to **IP2**, set your local IP Address in **IP Address**.
3. Remove **TCP Dynamic Ports** value.

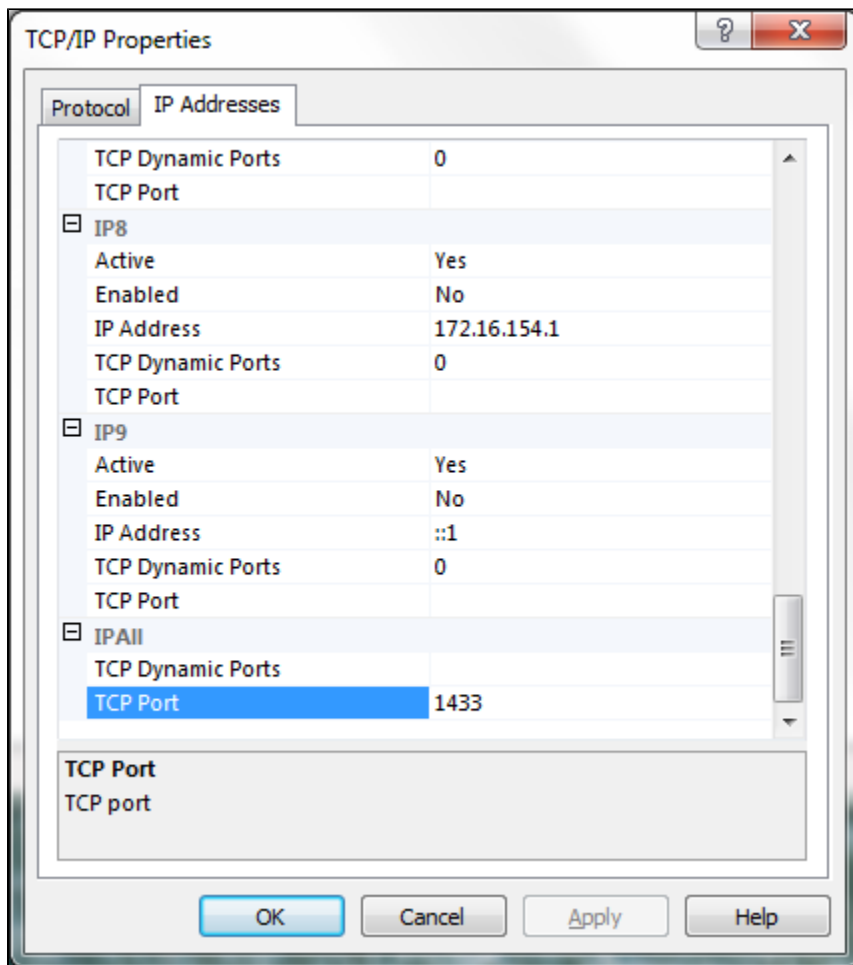


Figure 3: IPALL - TCP/IP Properties Under Protocols for SQLEXPRESS

1. Go to IPALL.
2. Empty TCP Dynamic Ports value.
3. Set TCP Port value to 1433.

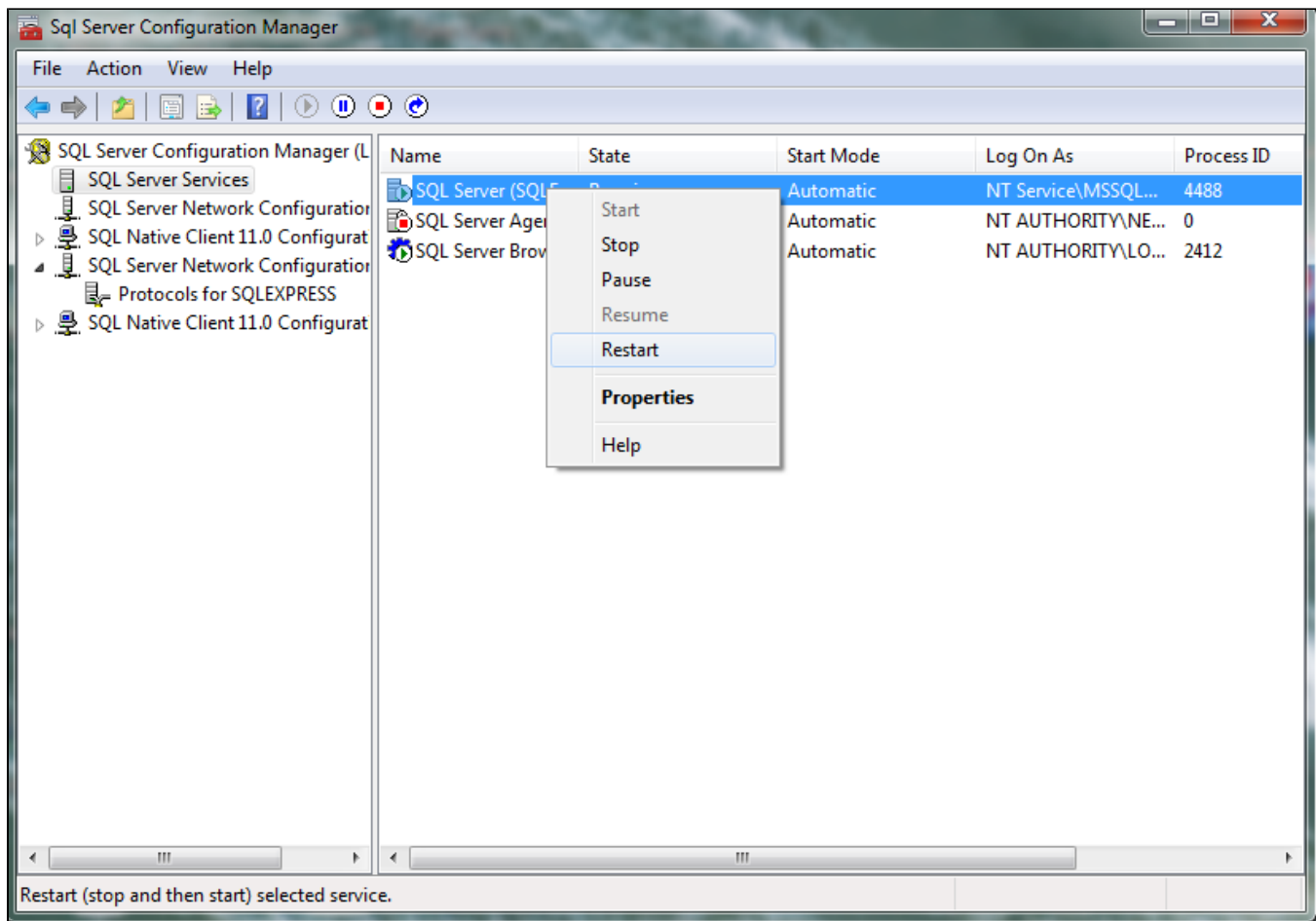


Figure 4: Restart SQL Server Service for changes to take effect

1. Restart the server for the changes to take effect.

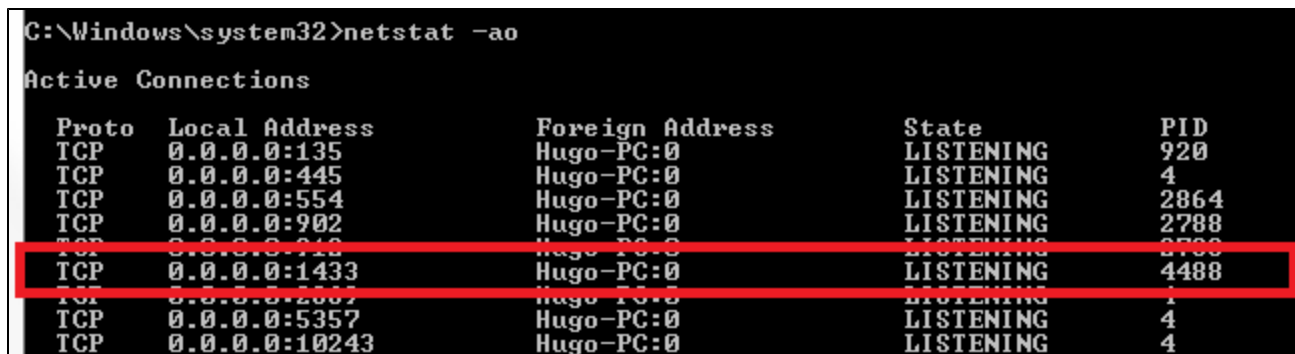


Figure 5: Verify the listening port using command prompt

1. Verify that the listener is working through command prompt by executing `netstat -ao`.

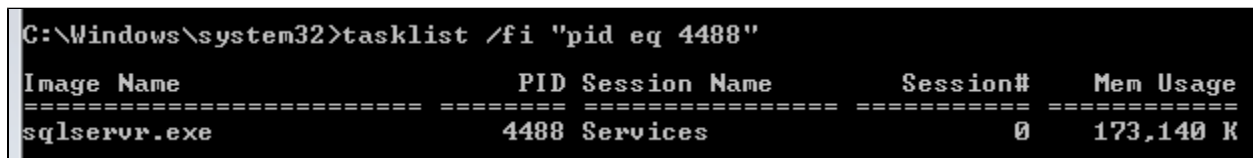


Figure 6: Verify Instance based on the PID

1. Check on which process instance is listening to the port by executing `tasklist /fi "pid eq 4488"`.