

Userview Builder

- Userview Elements
- Settings
- Mobile Options

Userview Builder lets you design the front-end interface in a matter of minutes. You may choose from the list of preloaded themes, or you may develop your own theme.

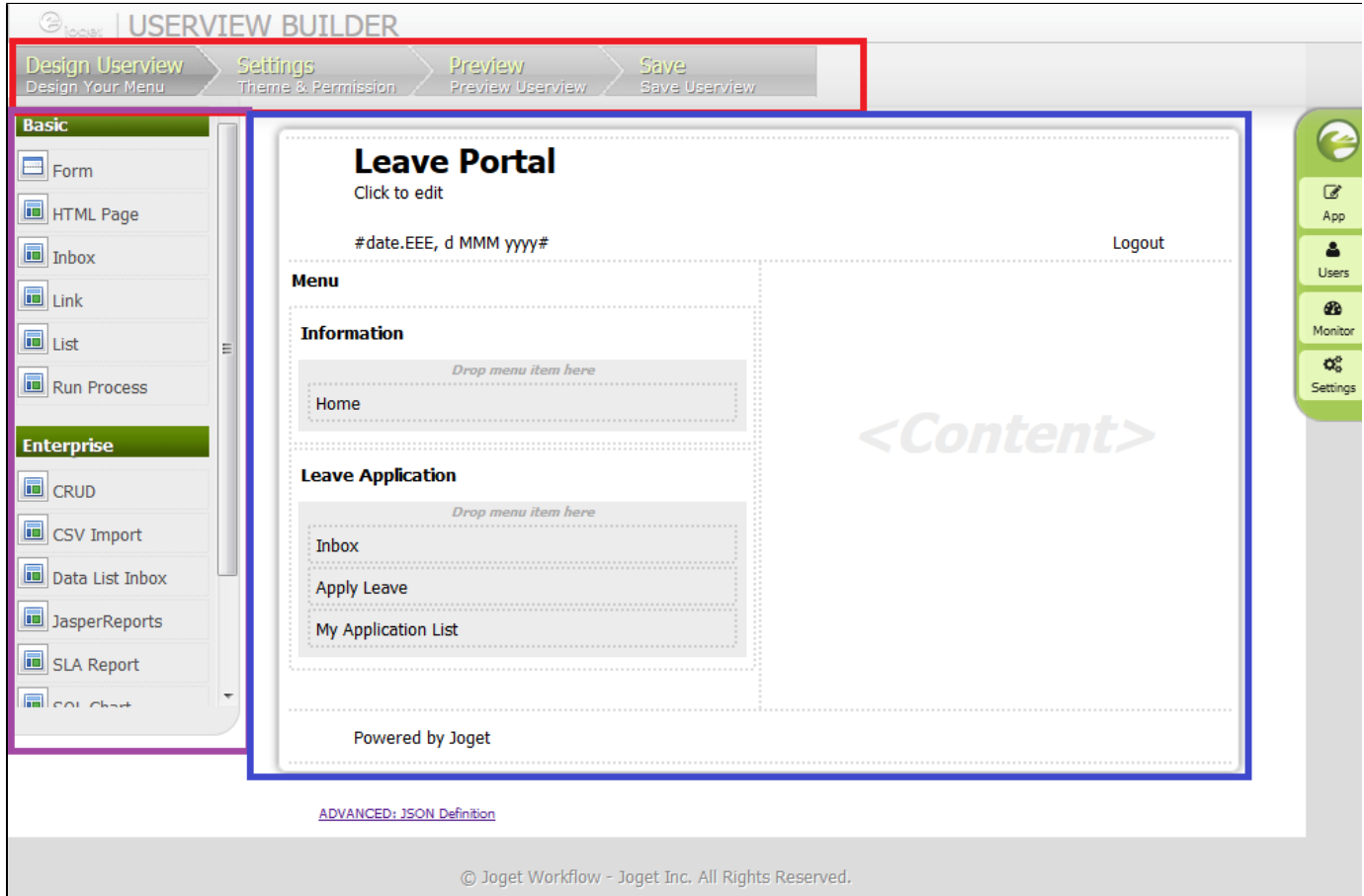


Figure 1: Userview Builder

Components

- Red - Menu bar
- Purple - Userview Elements Palette
- Blue - Design content pane

Userview Elements

- CRUD (Enterprise)
- CSV Import (Enterprise)
- Data List Inbox (Enterprise)
- Form
- HTML Page
- Inbox Userview Menu
- JasperReports Reporting Integration (Enterprise)
- Link
- List
- Run Process
- SLA Report (Enterprise)
- Universal Inbox (Enterprise)
- User Profile (Enterprise)

Settings

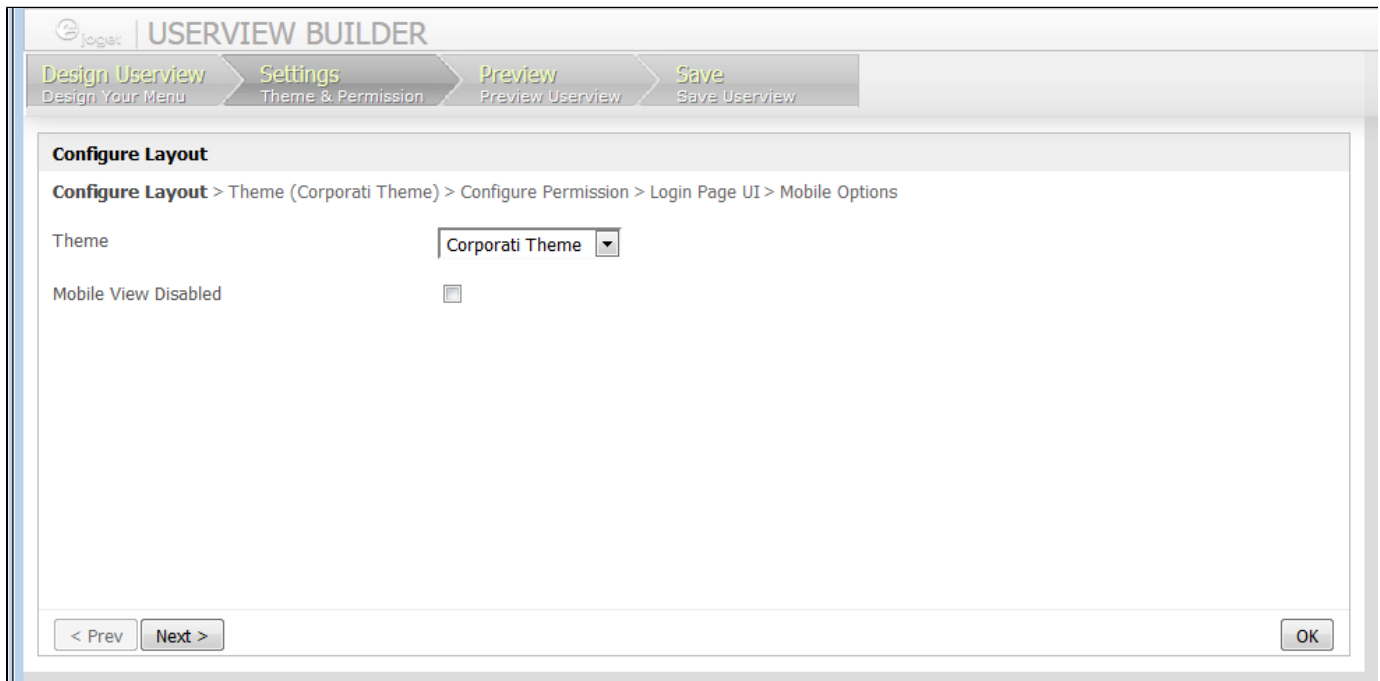


Figure 2: Userview Builder - Settings

In the **Settings** tab, one may customize the overall presentation of the Userview.

In the first tab itself, one would be able to select the [Userview Theme](#) that would define the overall look and feel of the Userview. Subsequent tabs would further refine the theme/Userview itself (e.g. Javascript, Permission Control, Custom Header/Footer/CSS)

Mobile Options

Mobile Options

Configure Layout > Theme (Corporati Theme) > Configure Permission > Login Page UI > **Mobile Options**

General

Mobile Offline Cache Enabled

Mobile Login Required First

UI

Mobile View Background URL

Mobile View Background Color

Mobile View Background Style

Mobile View Translucent Effect

Mobile View Logo URL

Mobile View Logo Width

Mobile View Logo Height

Mobile View Logo Alignment

Mobile View Custom CSS

< Prev Next > OK

Figure 3: Mobile Options

Userview Theme selected in the first tab is only applicable for **desktop view**, mobile view look and feel can be customized in the last tab - **Mobile Options**.

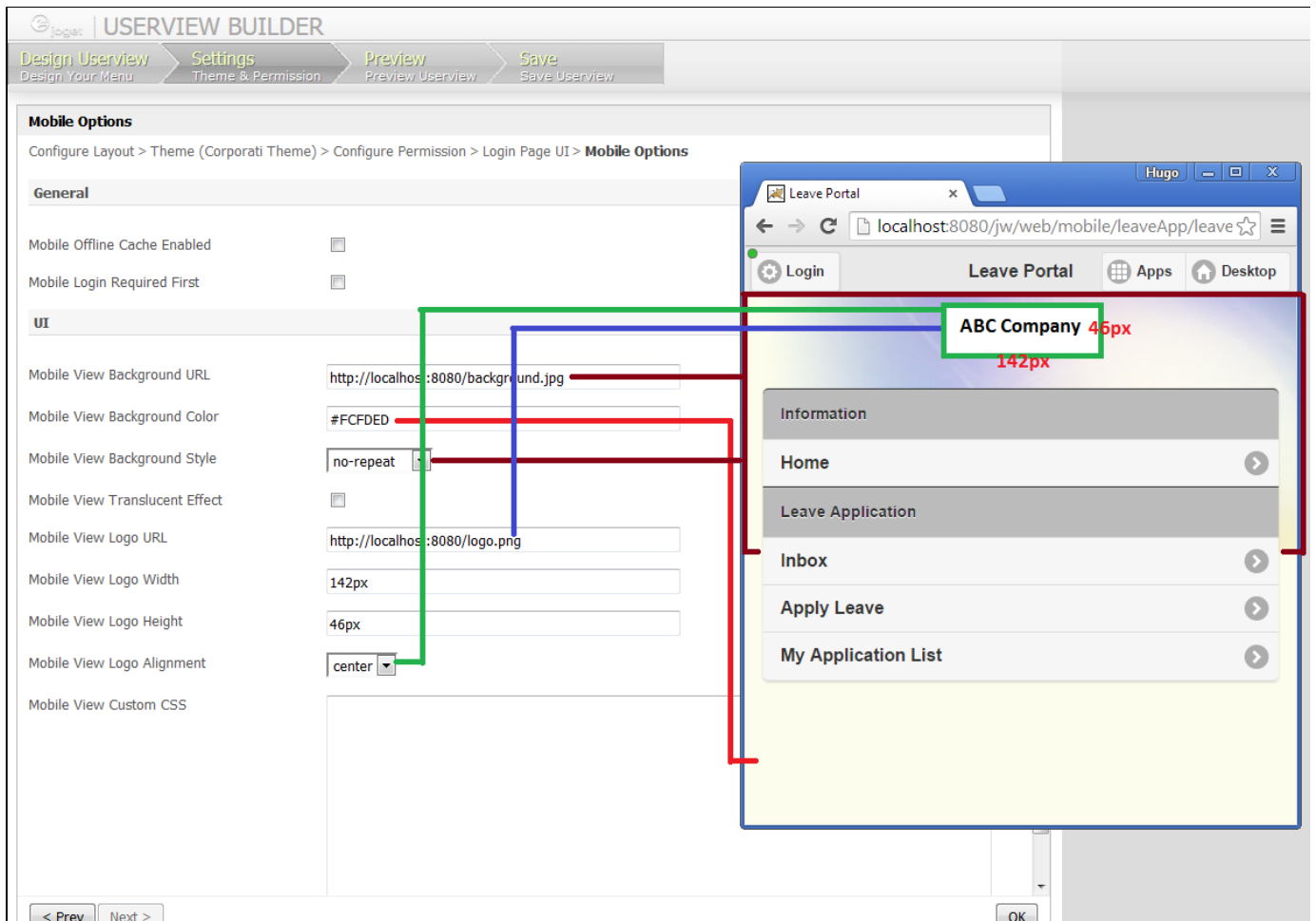


Figure 4: Sample Mobile View Configurations and its preview

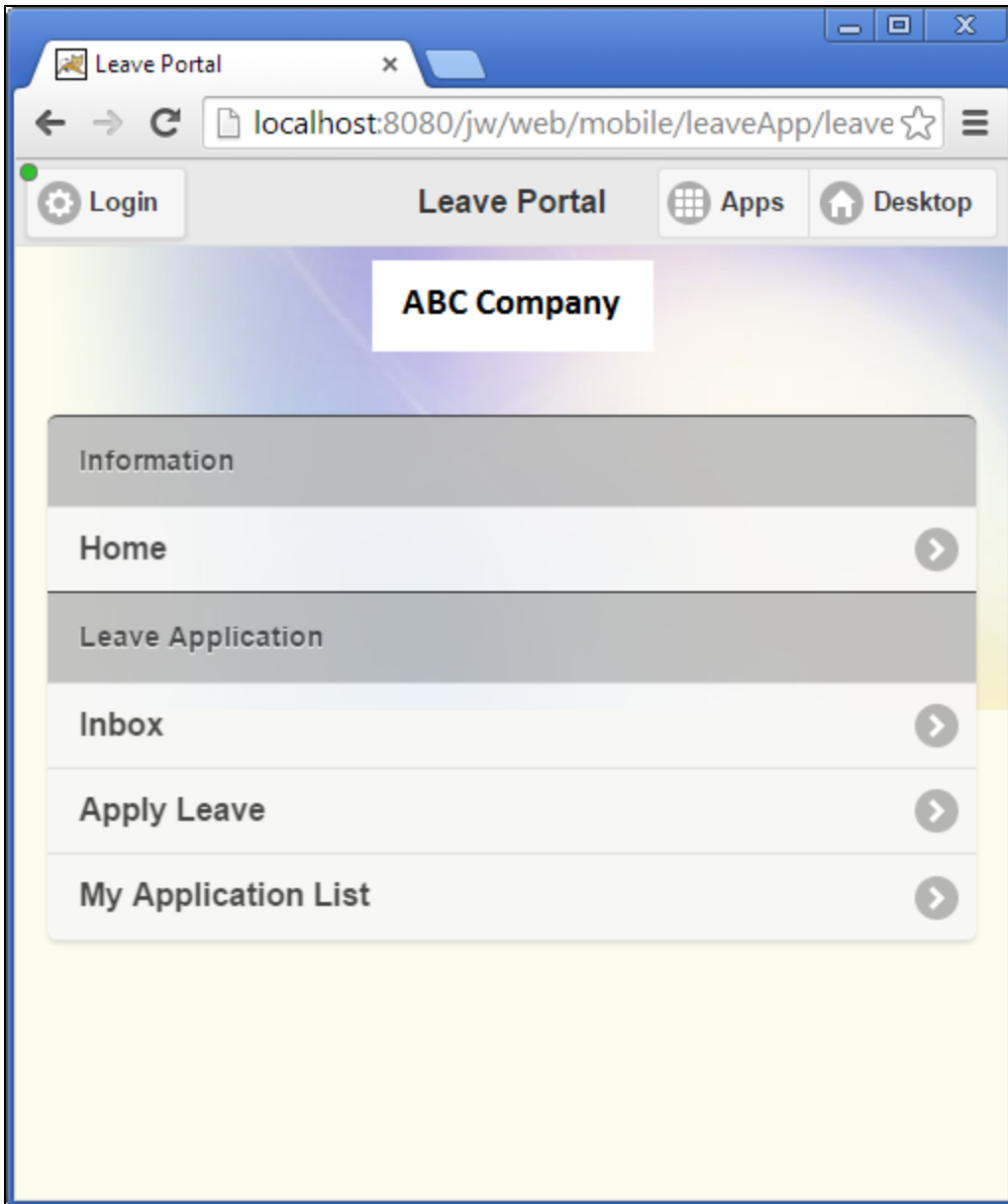


Figure 5: Sample Mobile View with Translucent effect

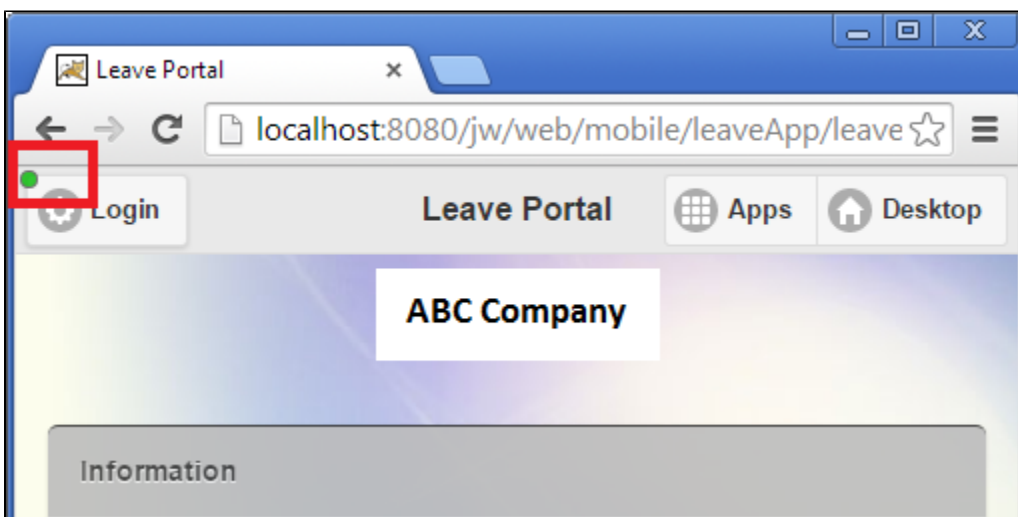


Figure 6: Online status indicator

General Attribute	Description
Mobile Offline Cache Enabled	When enabled, mobile offline caching capability will be used during offline when possible and when realtime server respond is not required. Network status will be indicated as depicted in Figure 6 . (e.g. User will be able to reopen links/pages in offline mode (as they have been cached) that have been opened before when the user was online)
Mobile Login Required First	Determine whether a user must first login into Joget or not before viewing the Userview.

UI Attribute	Description
Mobile View Background URL	Path to Background image (e.g. http://localhost:8080/background.jpg)
Mobile View Background Color	Background Color (e.g. #FCFDED)
Mobile View Background Style	<ul style="list-style-type: none"> • no-repeat • repeat • repeat-x • repeat-y • 100% width
Mobile View Translucent Effect	
Mobile View Logo URL	Path to Logo image (e.g. http://localhost:8080/logo.jpg)
Mobile View Logo Width	Width of Logo image (unit must be specified) (e.g. 142px)
Mobile View Logo Height	Height of Logo image (unit must be specified) (e.g. 46px)
Mobile View Logo Alignment	Alignment of logo <ul style="list-style-type: none"> • center • left • right
Mobile View Custom CSS	Inline CSS for further customization