

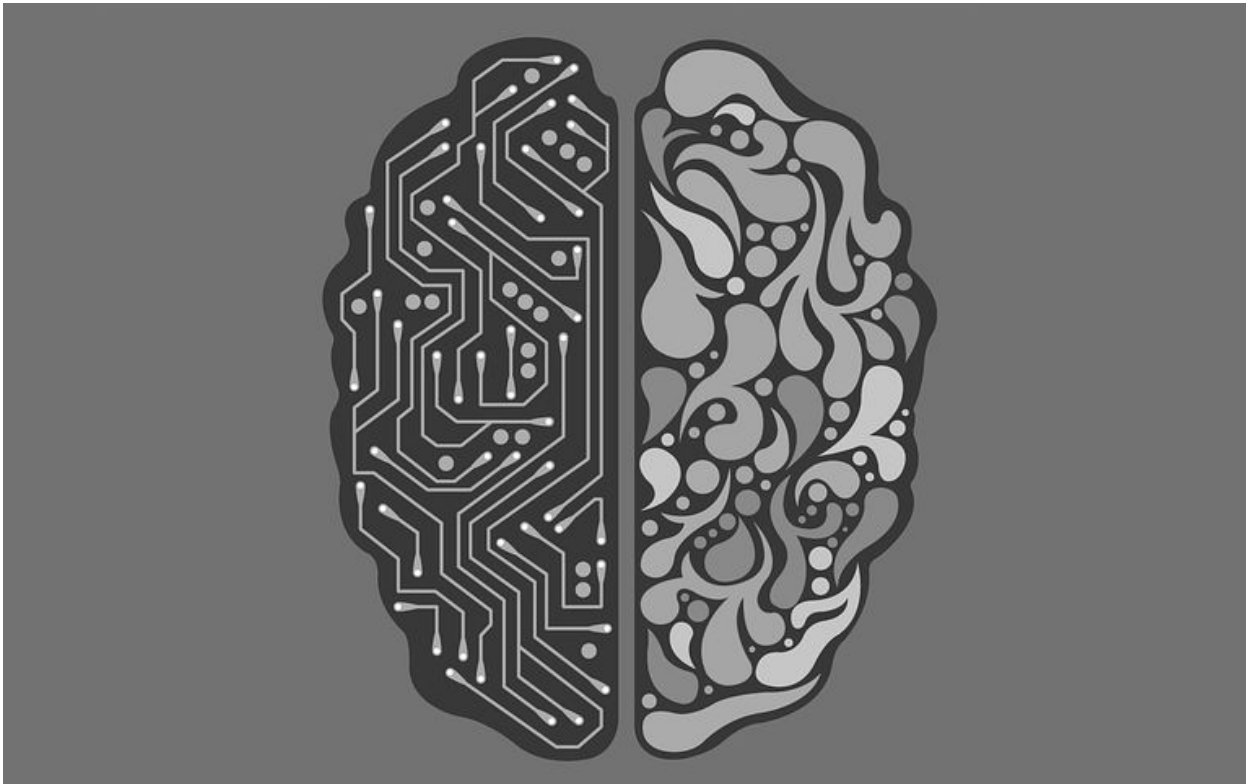
# AI Label Image Plugin

- [Description](#)
- [Plugin Info](#)
- [Installation](#)
- [Screenshots](#)
- [Plugin Properties](#)
- [Changelog](#)

## Description

### Introduction to AI

Artificial intelligence (AI) is the simulation of human intelligence processes by machines, especially computer systems. AI is a hot topic in technology today, with rapid advancements and increasing adoption in many areas e.g. smartphones, smarthomes and self-driving cars among others. AI and automation in business has tremendous potential, and will [change the future of the workforce](#).



### Introduction to TensorFlow

[TensorFlow](#) is an open source AI library for machine learning. Built by Google, TensorFlow is designed for implementing, training, testing and deploying deep learning neural networks.

Neural networks are used in a variety of applications, notably in classification problems such as speech and image recognition. The TensorFlow site provides a number of [tutorials](#) to get started.



The TensorFlow project provides a [sample model and Java code](#) for labelling images.

This [process tool plugin](#) uses that sample pre-trained neural network to determine a label and probability for a file upload field.

## Plugin Info

Plugin Type: Process Tool Plugin

Joget Version: v6

Joget Edition: Community and Enterprise

## Installation

1. Download the plugin JAR file



2. Upload the downloaded jar file through [Manage Plugins](#).
3. Map and configure the plugin to any [Process Tool/ Post Form Submission Processing Plugin](#).
4. A sample app is available for download [here](#):



APP\_ai\_label\_im...70530110042.jwa

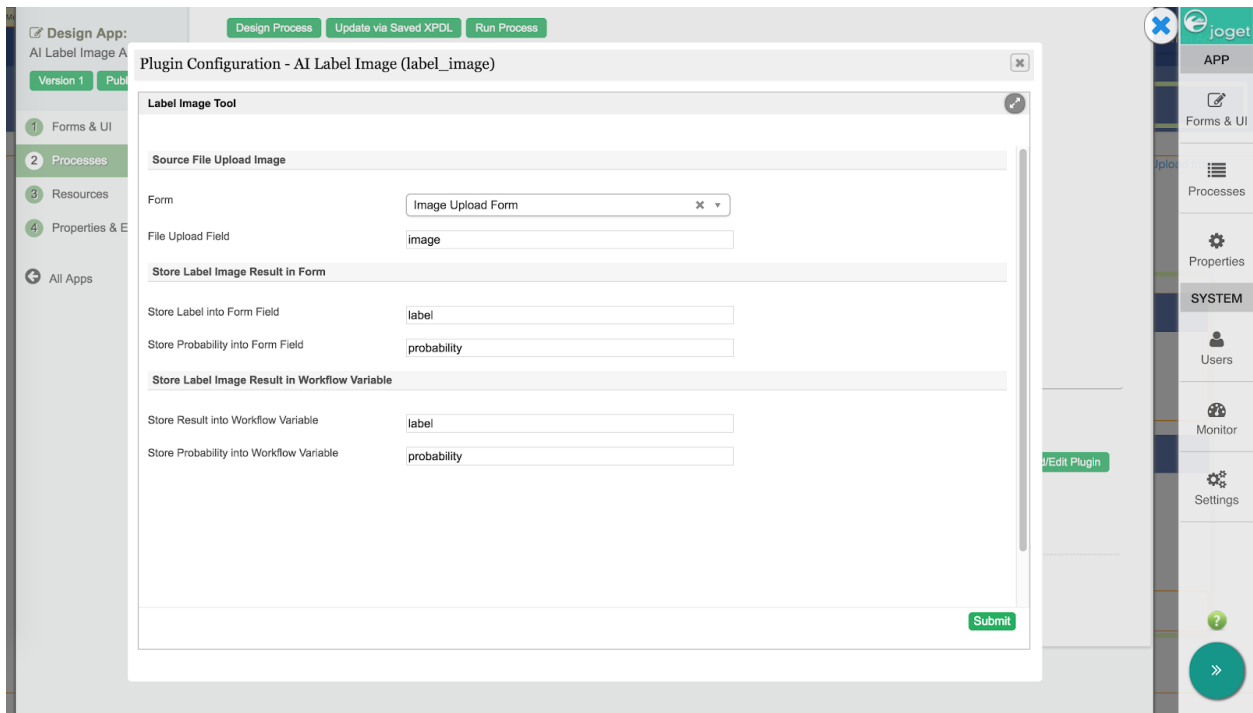
5. The source code for the plugin is available for download here:



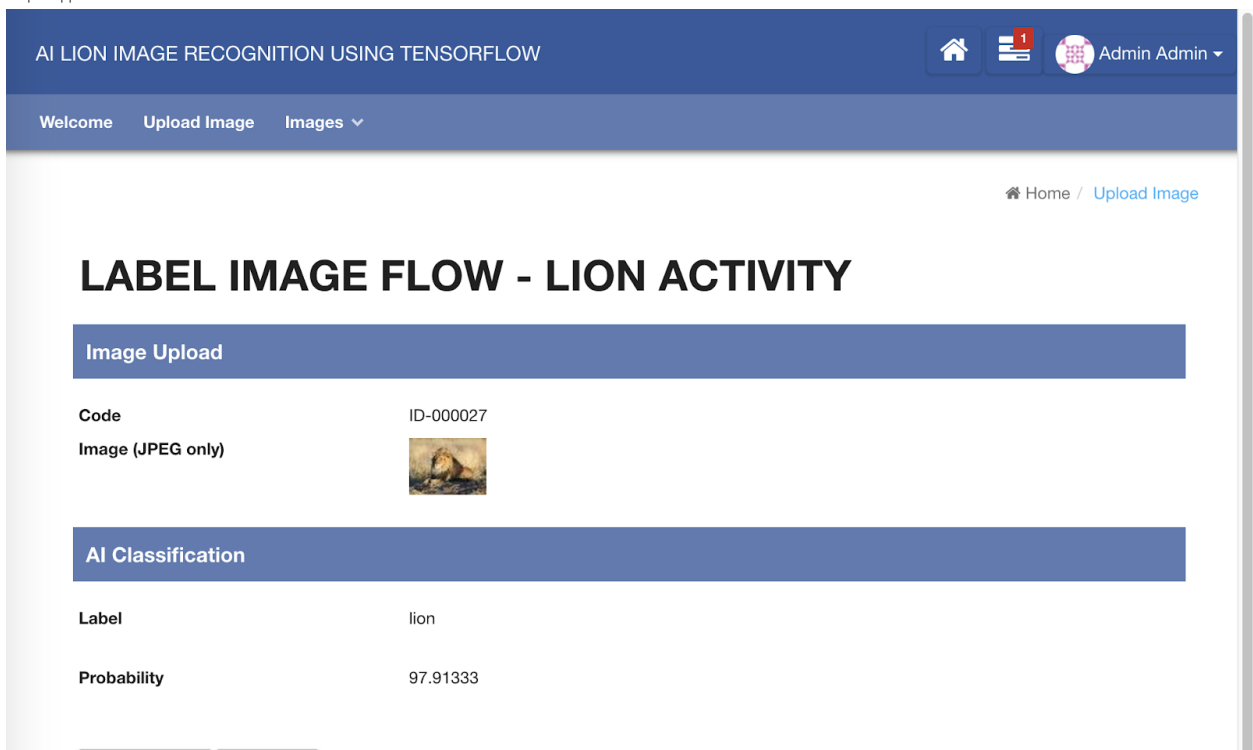
ai-label-image-src.zip

## Screenshots

1. Configuration



2. Sample app



## Plugin Properties

Source File Upload Image

Label	Description
Form	The form containing the file upload field
File Upload Field	The file upload field for the image to be recognized

#### Store Label Image Result in Form

Label	Description
Store Label into Form Field	The form field to store the label result of the processed image
Store Probability into Form Field	The form field to store the probability result of the processed image

#### Store Label Image Result in Workflow Variable

Label	Description
Store Result into Workflow Variable	The workflow variable to store the label result of the processed image
Store Probability into Workflow Variable	The workflow variable to store the probability result of the processed image

## Changelog

Version	Items
5.0.0	<ul style="list-style-type: none"><li>• Initial release</li></ul>