

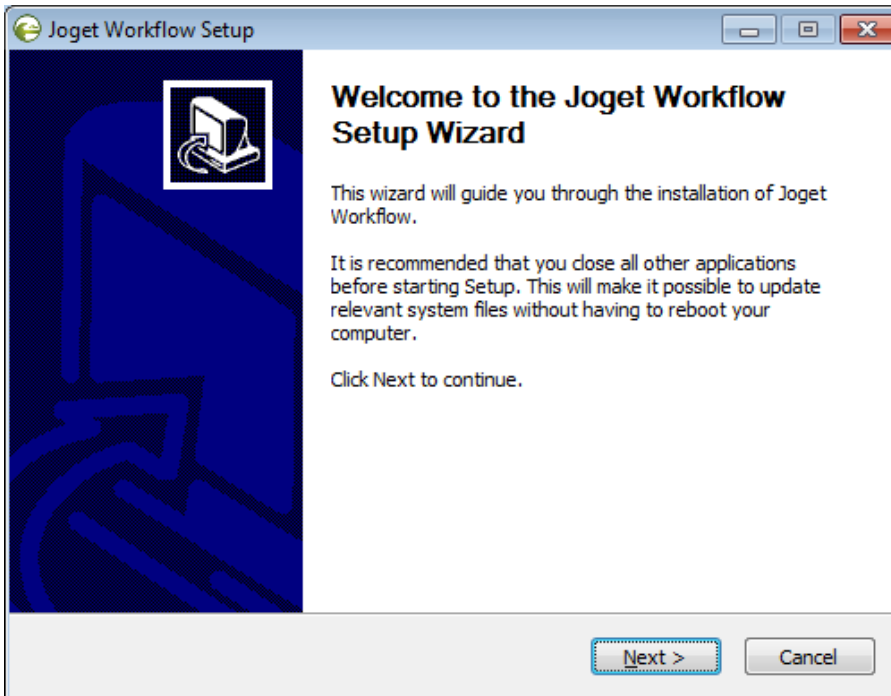
# Installation on Windows

## Video Tutorials

The Enterprise Edition installer comes bundled with MariaDB server. If you prefer a different database to work with, proceed with the setup process to change it in the Settings later.

## Installation Steps

1. Run the setup file joget-setup-xx.x.exe to launch the Setup Wizard.



2. Click on **Next** on the Introduction page, **I Agree** on the License page, and **Next** on the Components page.
3. Change the Destination folder if required, then, click on **Install**. Once the installation is complete, click on **Finish**.
4. To start the Joget Server, go to **Start Menu > Programs > Joget Workflow** and click on the green **Start Joget Server** icon under Joget Workflow. The startup might take some time, so please wait until the message "INFO: Server startup in XXXX ms" appears (XXXX represents the time taken for the startup). Do not close the command window.
5. Access the **App Center** at <http://localhost:8080/jw> OR Go to **Start Menu > Programs > Joget Workflow** and click on **App Center**. This will launch the App Center in a web browser.
6. Follow on with [Setting Up Database](#).
7. To stop the Joget Server, go to **Start Menu > Programs > Joget Workflow** and click on the red **Stop Joget Server** icon under Joget Workflow.