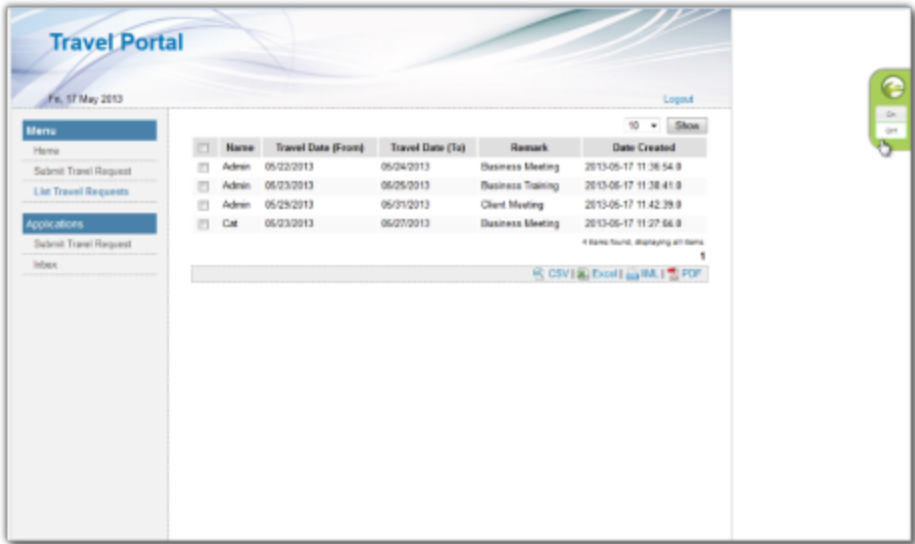


Managing Apps using the Quick Edit Mode

- 1. **Quick Edit Mode** is a new feature in v4 that allows administrators to identify forms, lists and menus directly from the front-end userview.
- 2. If you are logged in as an administrator, you will see a minimized **Admin Bar** on the right with buttons to toggle Quick Edit Mode **On** or **Off**.



- 3. Once Quick Edit Mode is enabled, elements within the userview page are highlighted with green Quick Edit buttons. Clicking on the button will launch the respective Builder in a new window.

