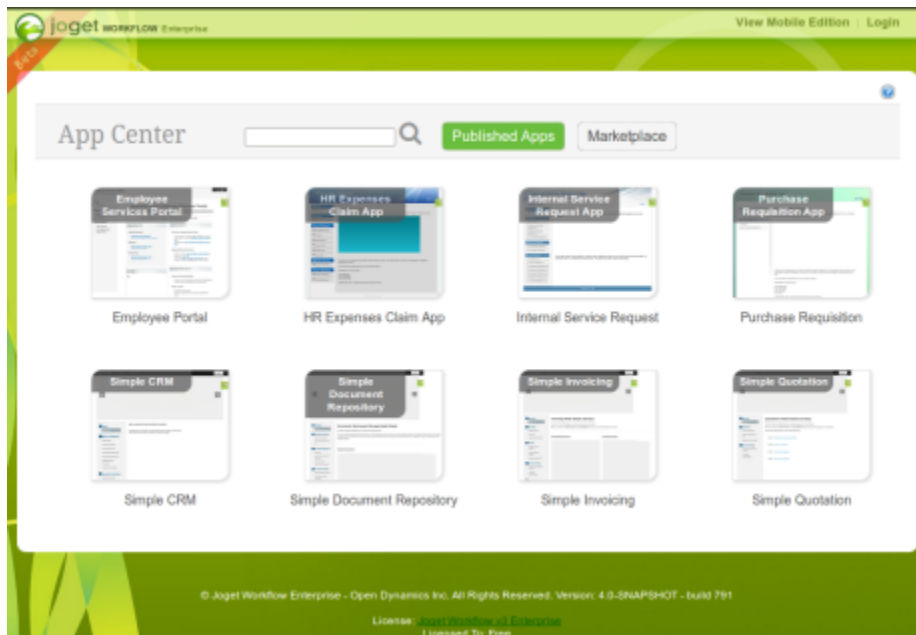
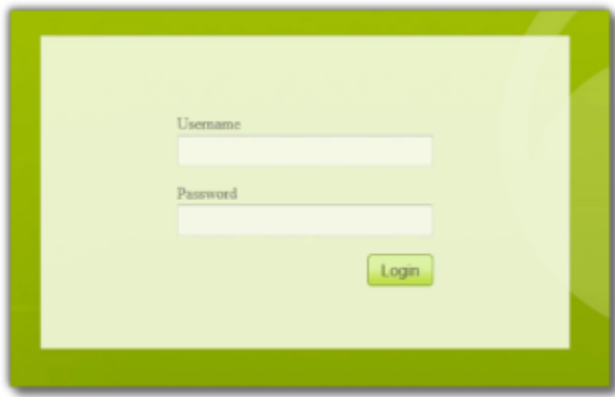


# Introducing Apps

1. Joget Workflow apps can range from a simple database-driven app, to a complex approval process, or even a full-fledged solution (e.g. CRM) which incorporates workflow, data management and reporting.
2. The **App Center** is the default landing page in Joget v4 which displays a grid of published apps. To access the App Center, use a web browser to access the Joget server at <http://localhost:8080/jw> (Replace **localhost** and **8080** with the appropriate server host and port if necessary)



3. Click on the **Login** link on the **top right** to login as a user. Each user may have access to different apps depending on permissions.



Some sample logins are provided in a standard installation as follows:

## Administrator:

Username: admin

Password: admin

## Normal User (Employee):

Username: cat

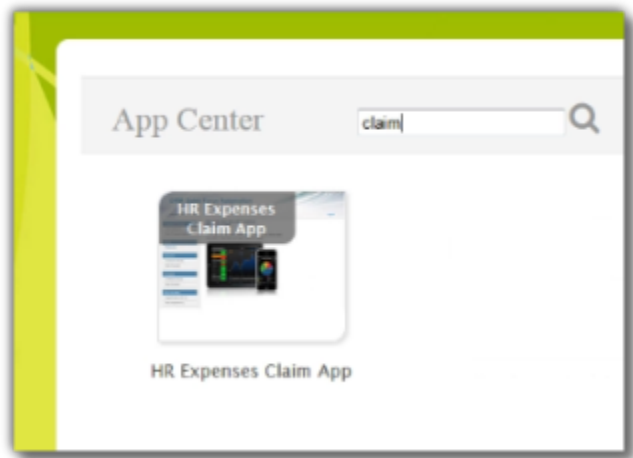
Password: password

## Normal User (Manager):

Username: clark

Password: password

4. Use the search box to quickly find an app. For example, type **claim** to look for the sample **HR Expenses Claim App**



5. Clicking on the app icon will launch that app in a separate browser window.