

Userview Builder

- Userview Elements
- Settings
- Mobile Options

Userview Builder lets you design the front-end interface in a matter of minutes. You may choose from the list of preloaded themes, or you may develop your own theme.

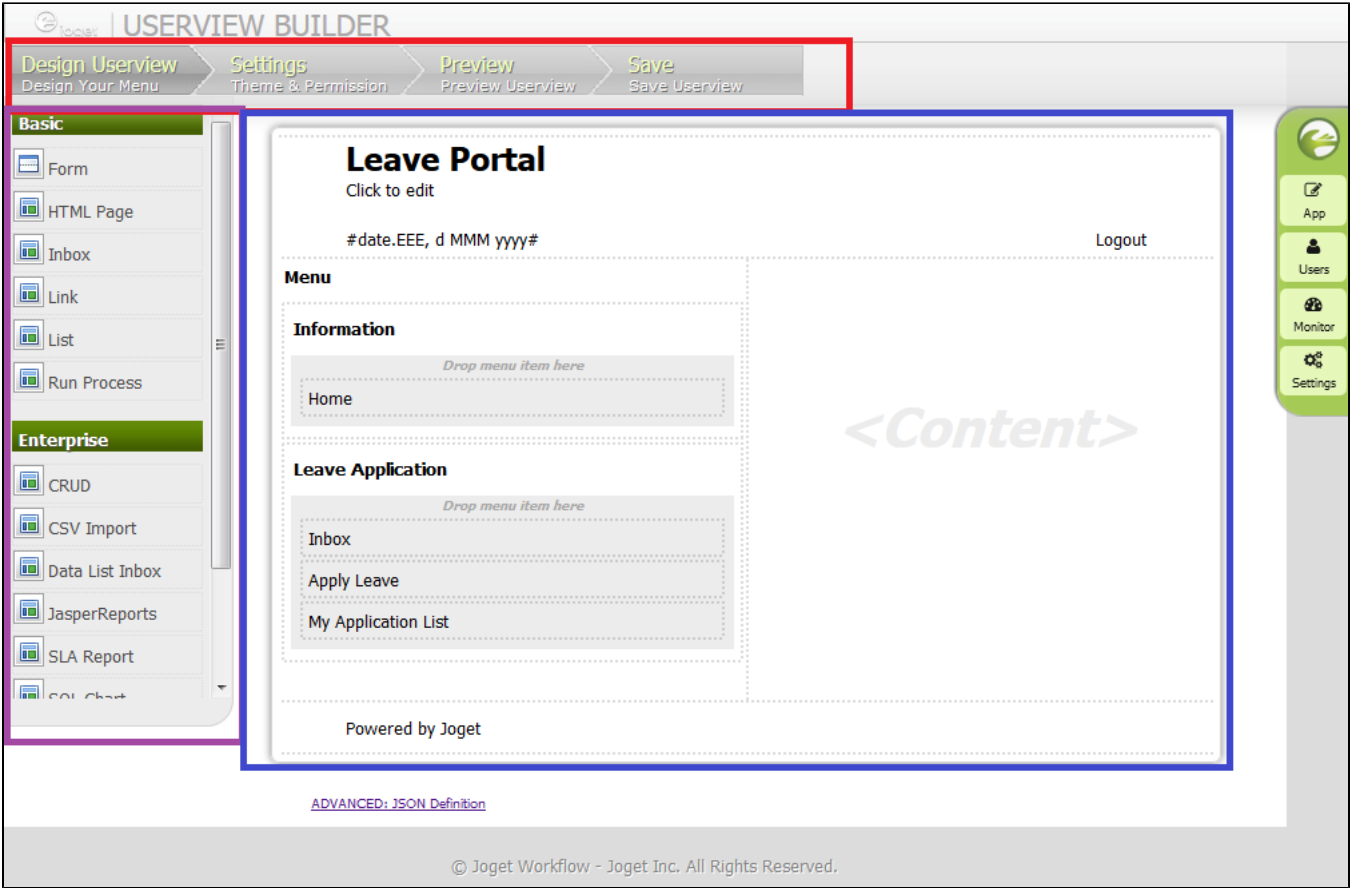


Figure 1: Userview Builder

Components

- Red - Menu bar
- Purple - Userview Elements Palette
- Blue - Design content pane

Userview Elements

- CRUD (Enterprise)
- CSV Import (Enterprise)
- Data List Inbox (Enterprise)
- Form
- HTML Page
- Inbox Userview Menu
- JasperReports Reporting Integration (Enterprise)
- Link
- List
- Run Process
- SLA Report (Enterprise)
- Universal Inbox (Enterprise)
- User Profile (Enterprise)

Settings

USERVIEW BUILDER

Design Userview
Design Your Menu

Settings
Theme & Permission

Preview
Preview Userview

Save
Save Userview

Configure Layout

Configure Layout > Theme (Corporati Theme) > Configure Permission > Login Page UI > Mobile Options

Theme: Corporati Theme

Mobile View Disabled: ☐

< Prev Next > OK

Figure 2: Userview Builder - Settings

In the **Settings** tab, one may customize the overall presentation of the Userview.

In the first tab itself, one would be able to select the [Userview Theme](#) that would define the overall look and feel of the Userview. Subsequent tabs would further refine the theme/Userview itself (e.g. Javascript, Permission Control, Custom Header/Footer/CSS)

Mobile Options

Mobile Options

Configure Layout > Theme (Corporati Theme) > Configure Permission > Login Page UI > Mobile Options

General

Mobile Offline Cache Enabled

☐

Mobile Login Required First

☐

UI

Mobile View Background URL

Mobile View Background Color

Mobile View Background Style

repeat

Mobile View Translucent Effect

☒

Mobile View Logo URL

Mobile View Logo Width

Mobile View Logo Height

Mobile View Logo Alignment

left

Mobile View Custom CSS

< Prev

Next >

OK

Figure 3: Mobile Options

Userview Theme selected in the first tab is only applicable for **desktop view**, mobile view look and feel can be customized in the last tab - **Mobile Options**.

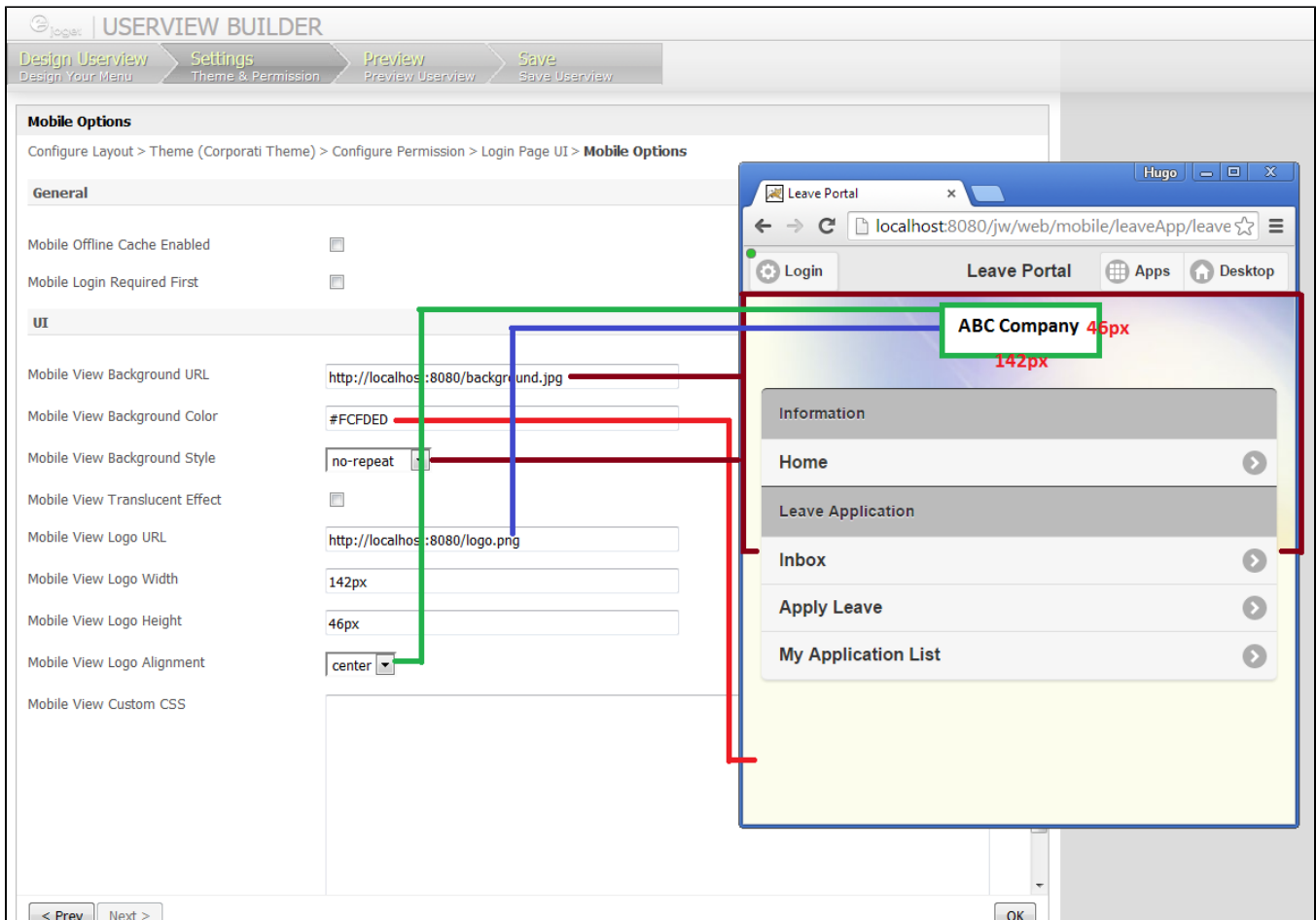


Figure 4: Sample Mobile View Configurations and its preview

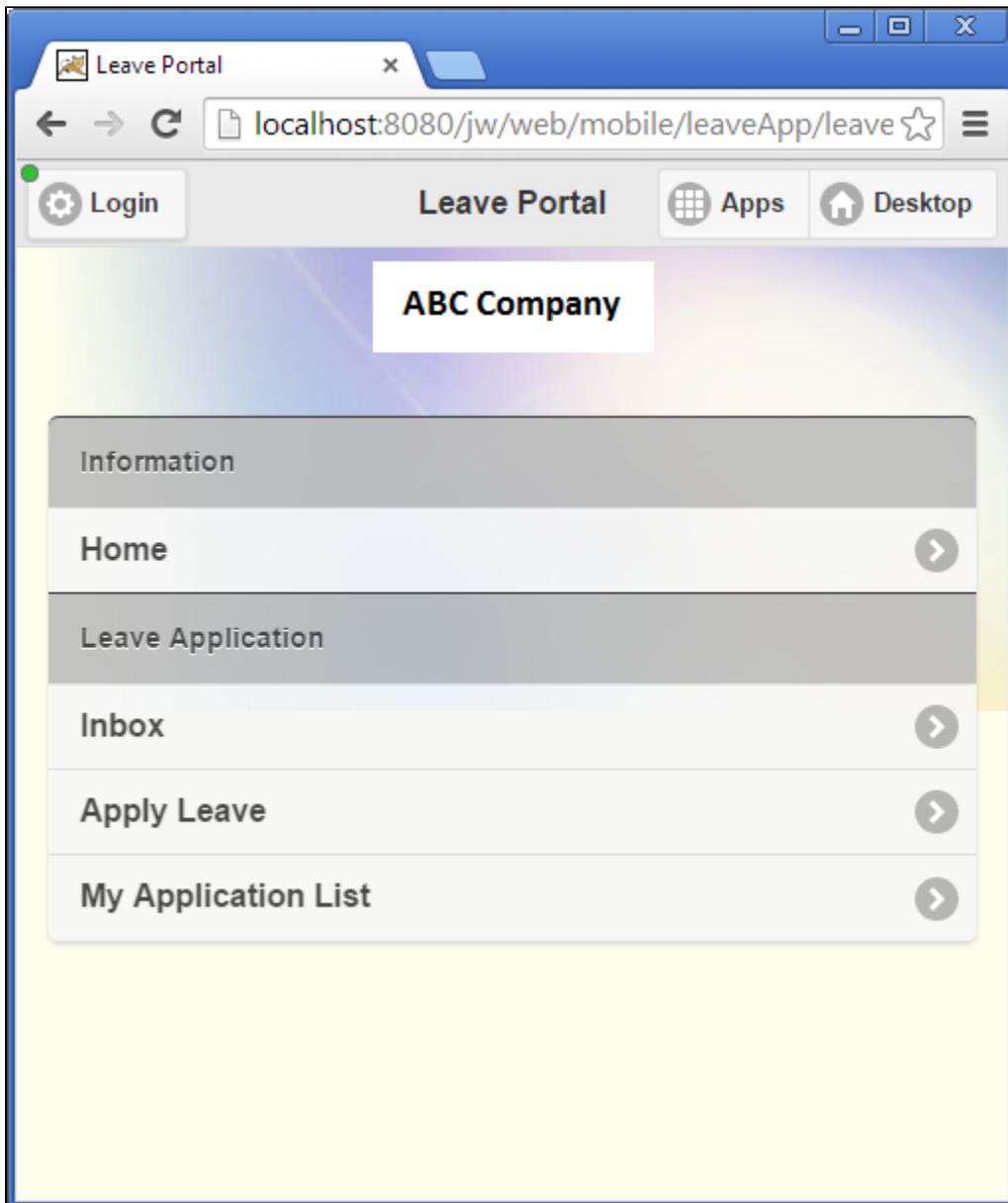


Figure 5: Sample Mobile View with Translucent effect

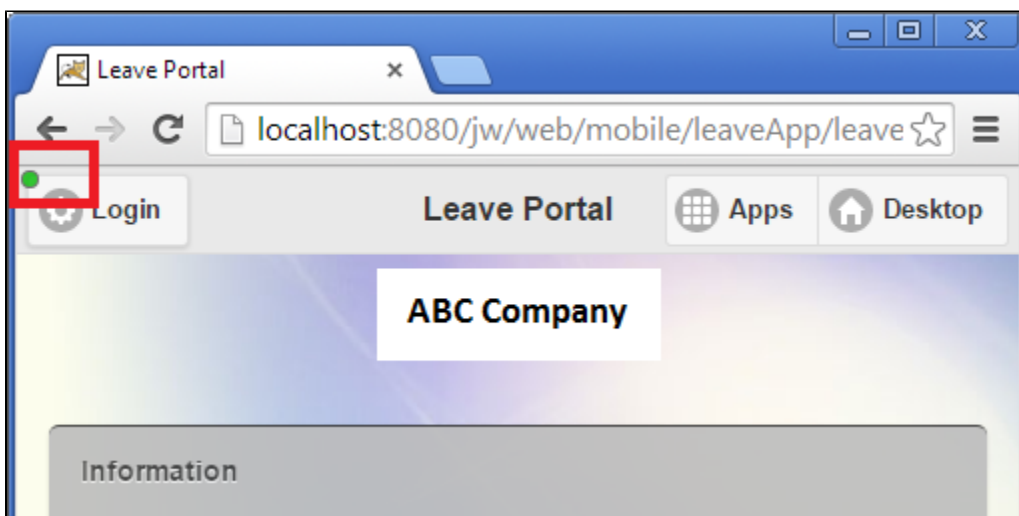


Figure 6: Online status indicator

| General Attribute | Description |
|------------------------------|--|
| Mobile Offline Cache Enabled | When enabled, mobile offline caching capability will be used during offline when possible and when realtime server respond is not required. Network status will be indicated as depicted in Figure 6 . (e.g. User will be able to reopen links/pages in offline mode (as they have been cached) that have been opened before when the user was online) |
| Mobile Login Required First | Determine whether a user must first login into Joget or not before viewing the Userview. |

| UI Attribute | Description |
|--------------------------------|---|
| Mobile View Background URL | Path to Background image (e.g. http://localhost:8080/background.jpg) |
| Mobile View Background Color | Background Color (e.g. #FCFDED) |
| Mobile View Background Style | <ul style="list-style-type: none"> • no-repeat • repeat • repeat-x • repeat-y • 100% width |
| Mobile View Translucent Effect | |
| Mobile View Logo URL | Path to Logo image (e.g. http://localhost:8080/logo.jpg) |
| Mobile View Logo Width | Width of Logo image (unit must be specified) (e.g. 142px) |
| Mobile View Logo Height | Height of Logo image (unit must be specified) (e.g. 46px) |
| Mobile View Logo Alignment | Alignment of logo <ul style="list-style-type: none"> • center • left • right |
| Mobile View Custom CSS | Inline CSS for further customization |