

# Home (App Center)

**Joget Workflow** apps can range from a simple database-driven app, to a complex approval process, or even a full-fledged solution (e.g. CRM) which incorporates workflow, data management and reporting.

The **App Center** is the default landing page in Joget v5 which displays a grid of published apps. To access the App Center, use a web browser to access the Joget server at <http://localhost:8080/jw> (Replace **localhost** and **8080** with the appropriate server host and port if necessary)

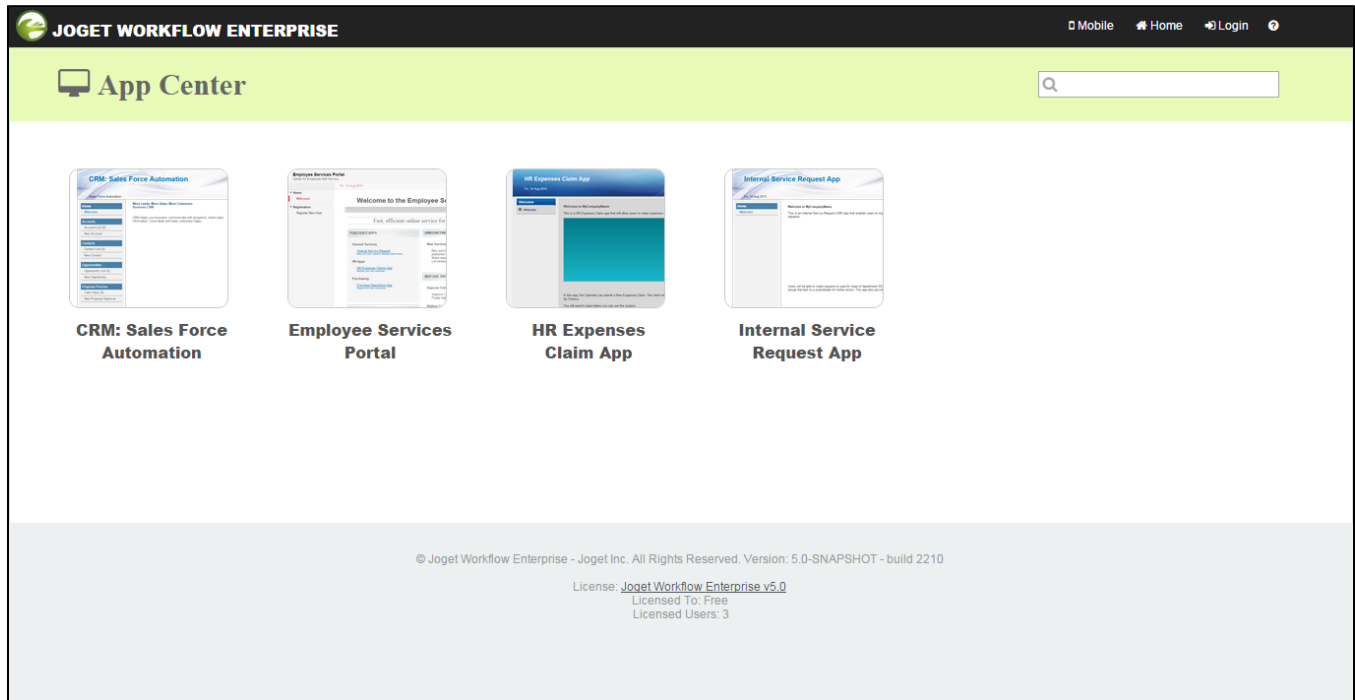


Figure 1: App Center



## What defines the listing in App Center?

A Joget App may contain one or more Userviews.

Each Userview that is accessible by the current logged in user will appear in the App Center accordingly.

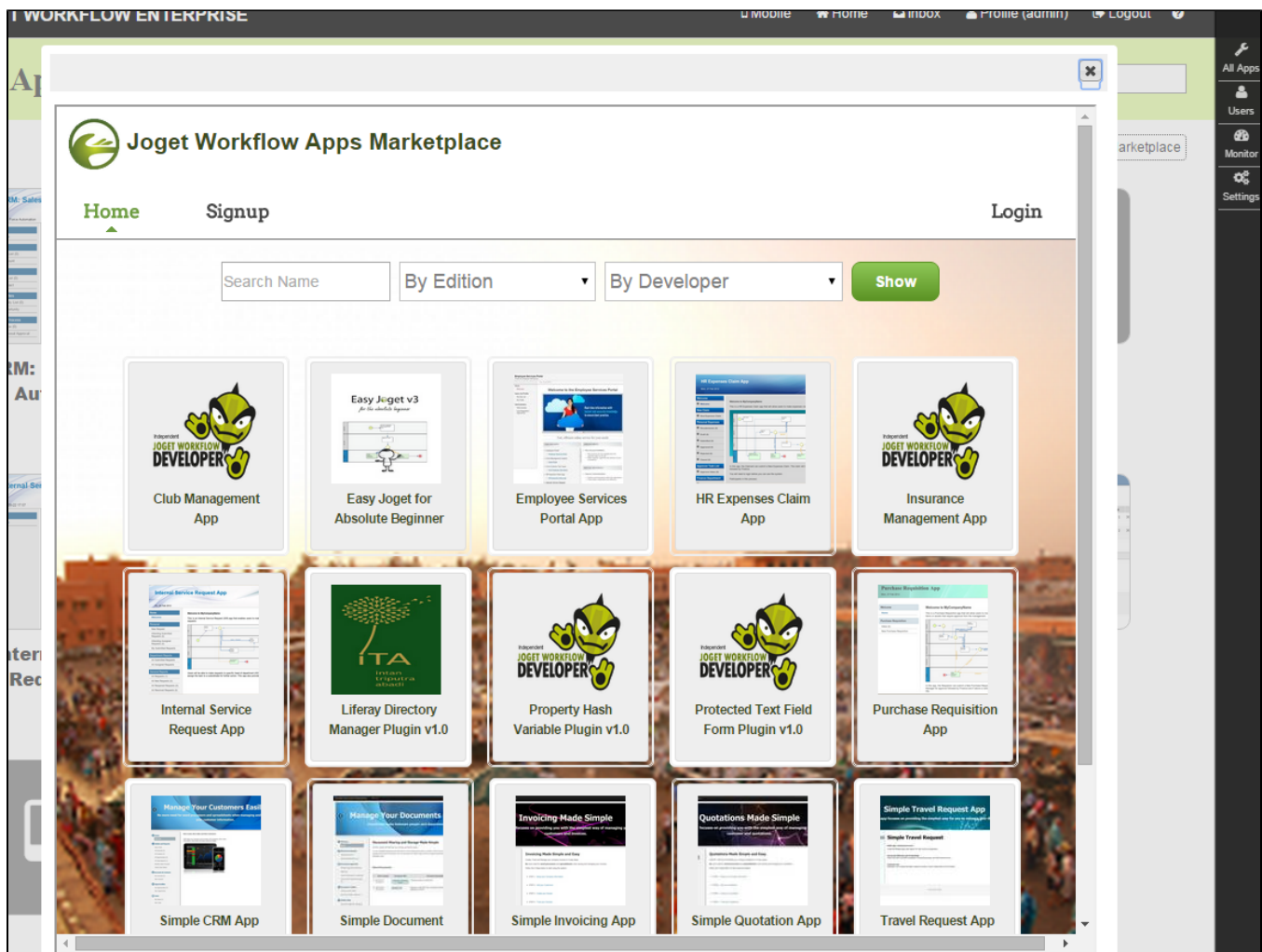


Figure 2: Marketplace

One can also easily browse through available apps listed in the [Marketplace](#) and seamlessly install it into its own environment.

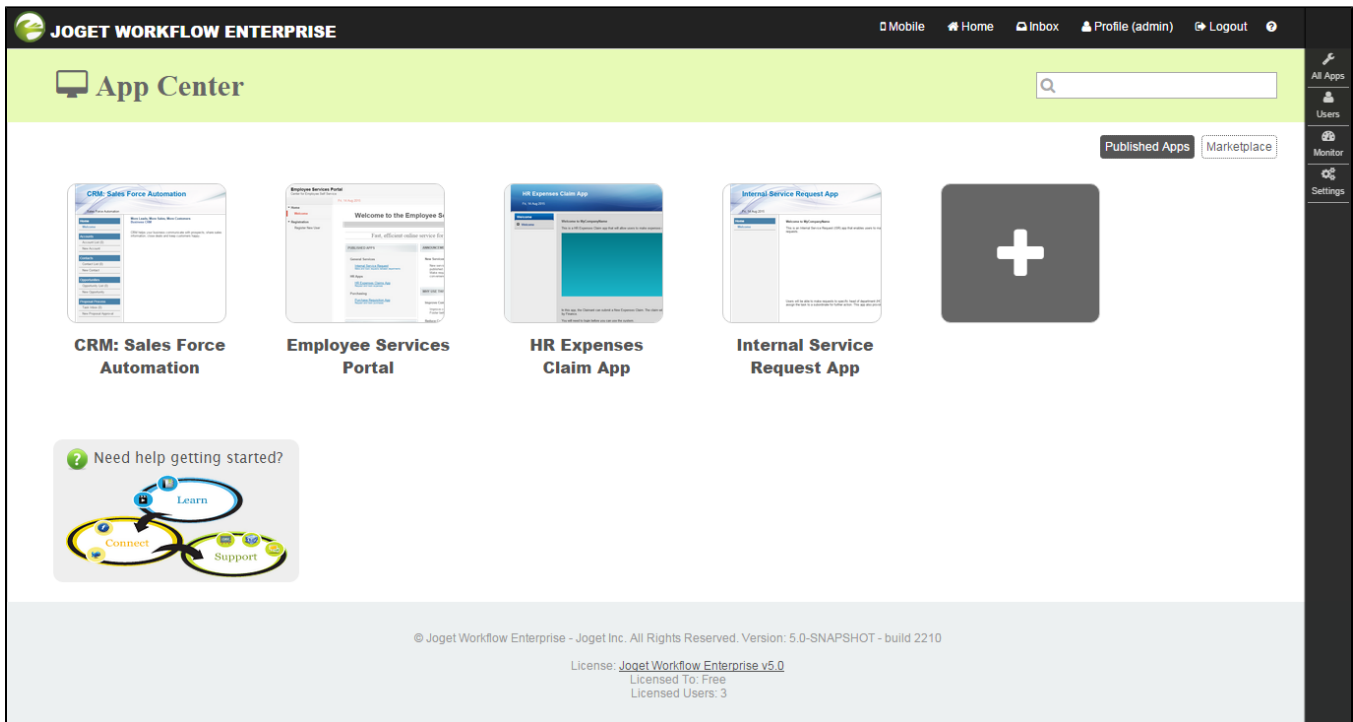


Figure 3: App Center (Logged in as Administrator)

When a user with Administrator role logged in into the system, a sidebar will appear on the right. The sidebar provides administrative access to various parts of the system. They are:-

- [All Apps](#)
- [Users](#)
- [Monitor Apps](#)
- [Settings](#)