


Process Data Collector

Process Data Collector can be enabled at the App's level to allow SLA information to be gathered for statistical and analytic purpose.

You may enable the **Process Data Collector** plugin in your app's Plugin Default Properties.

Go to **Properties & Export > Set Plugin Default Properties** -> Choose **Process Data Collector** -> **Submit**.

 **What to configure?**

There is no further configuration needed after the submission.

Once enabled, data will be written into **app_report_*** tables in your Joget database.

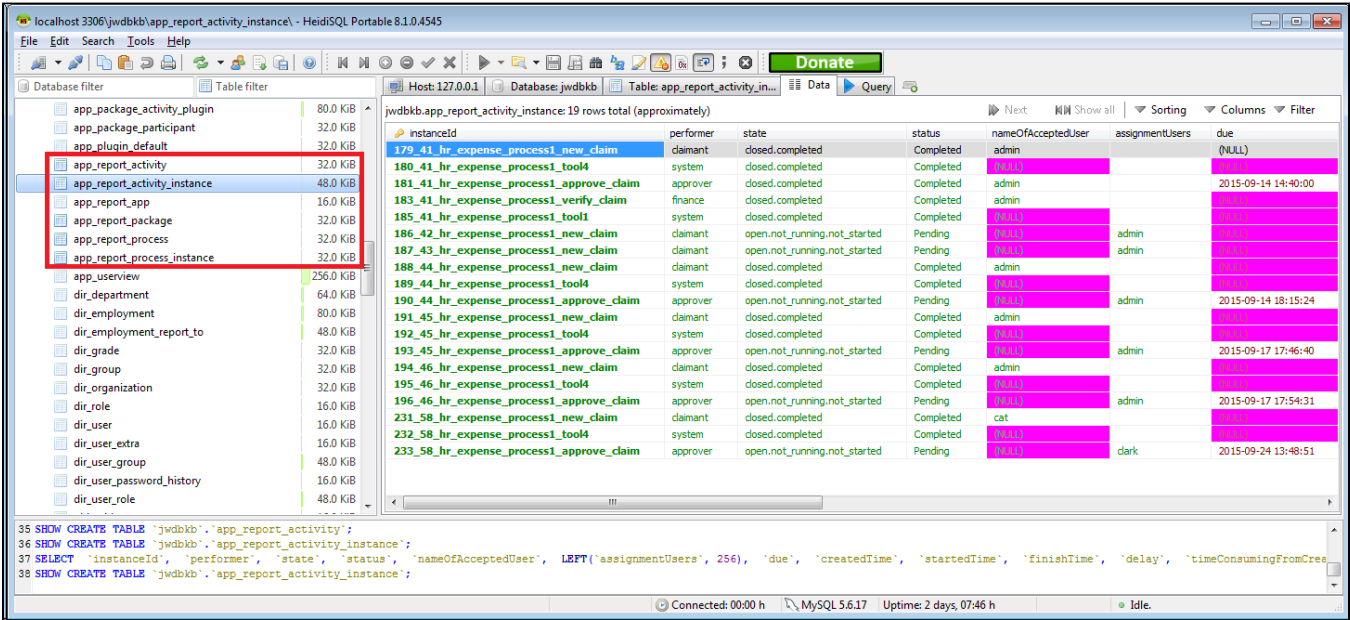


Figure 1: Sample database table view on data stored by Process Data Collector

Related: [Enabling Data Collection for SLA Implementation](#)