

Directory Manager Settings

Directory Manager Settings allows you to manage on how Joget accesses directory user information.

By default, Joget uses its embedded directory manager to manage its users.

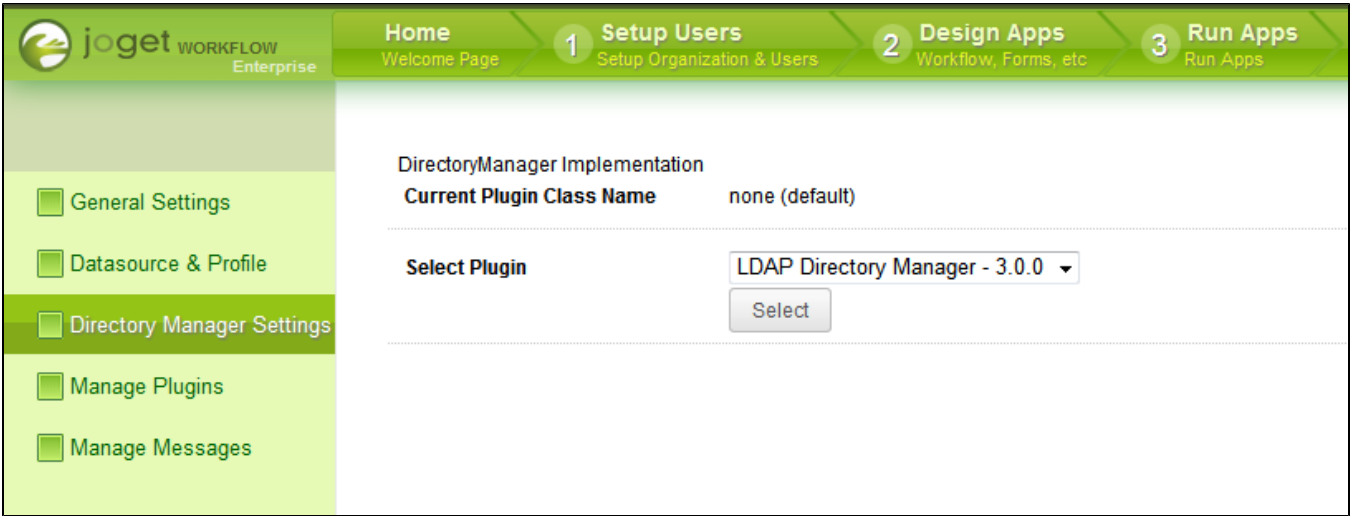


Figure 1: Directory Manager Settings

You may switch from the embedded directory manager to other compatible Directory Manager plugin such as the following:-

- [LDAP Directory Manager](#)
- [Security Enhanced Directory Manager](#)