

# Reuse Participants in New Process

If you have one or more processes under the same app, you can make use of participants created in an earlier process and minimize maintenance of your workflow design later on.

The example below shows how to insert an existing participant into a newly-created process.

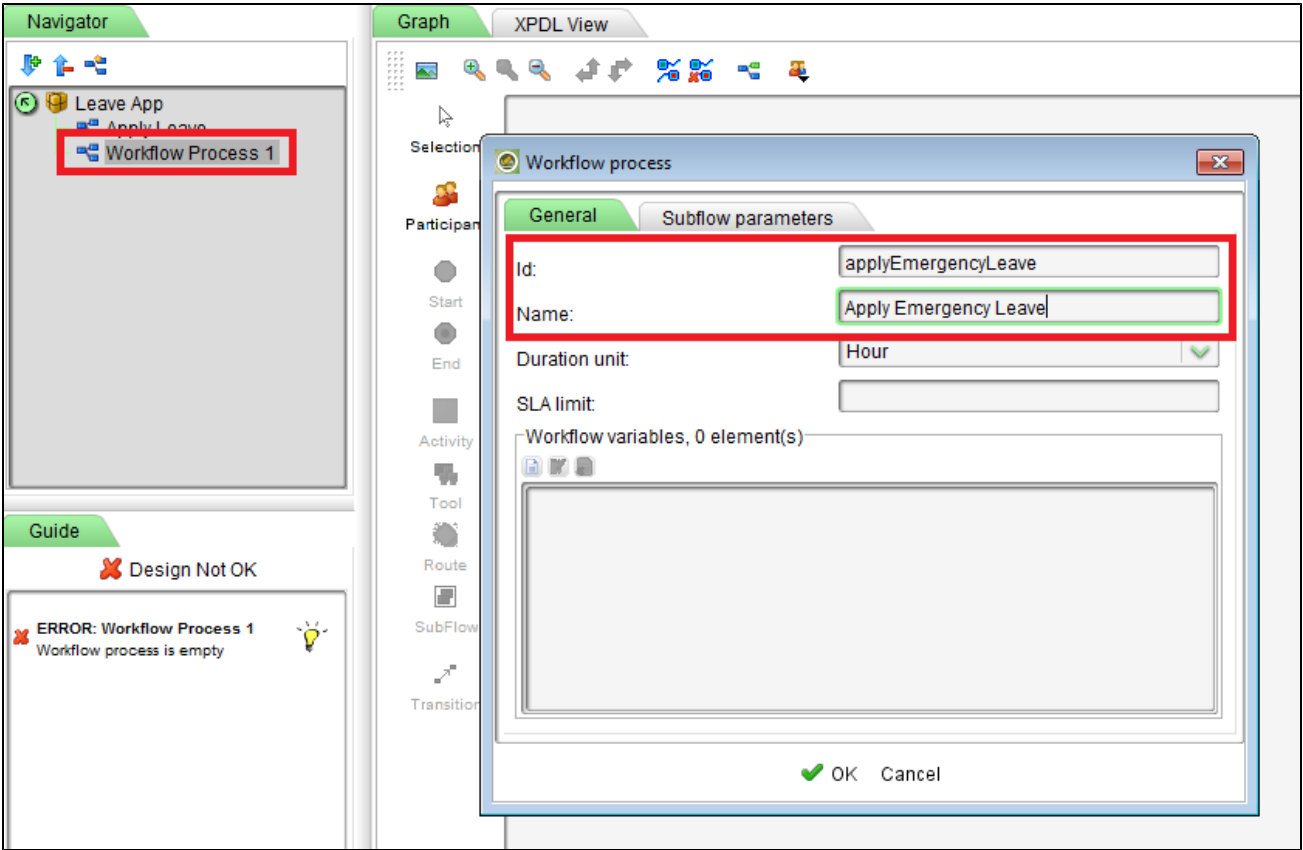


Figure 1: Creating New Process

In the top toolbar, click on the **Insert existing participant in graph** icon. You will see a list of participants already created in your app.

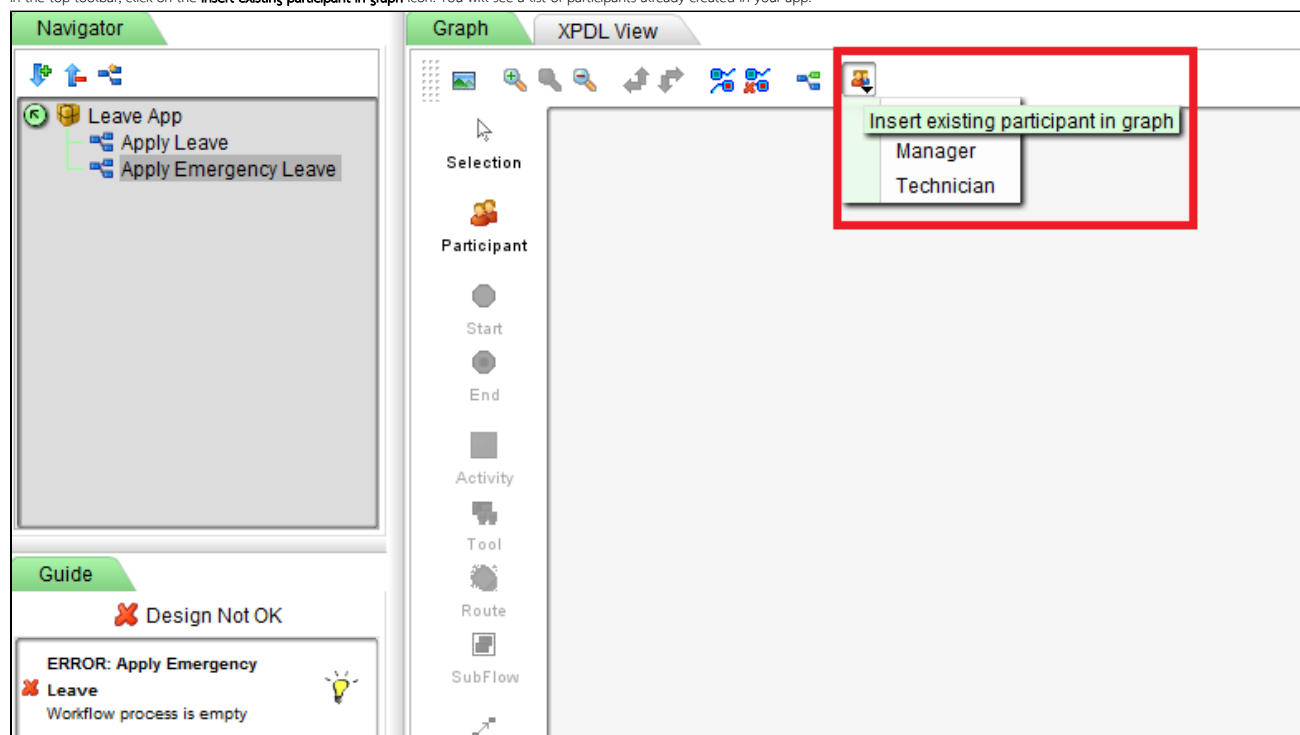


Figure 2: Insert Existing Participant in Graph

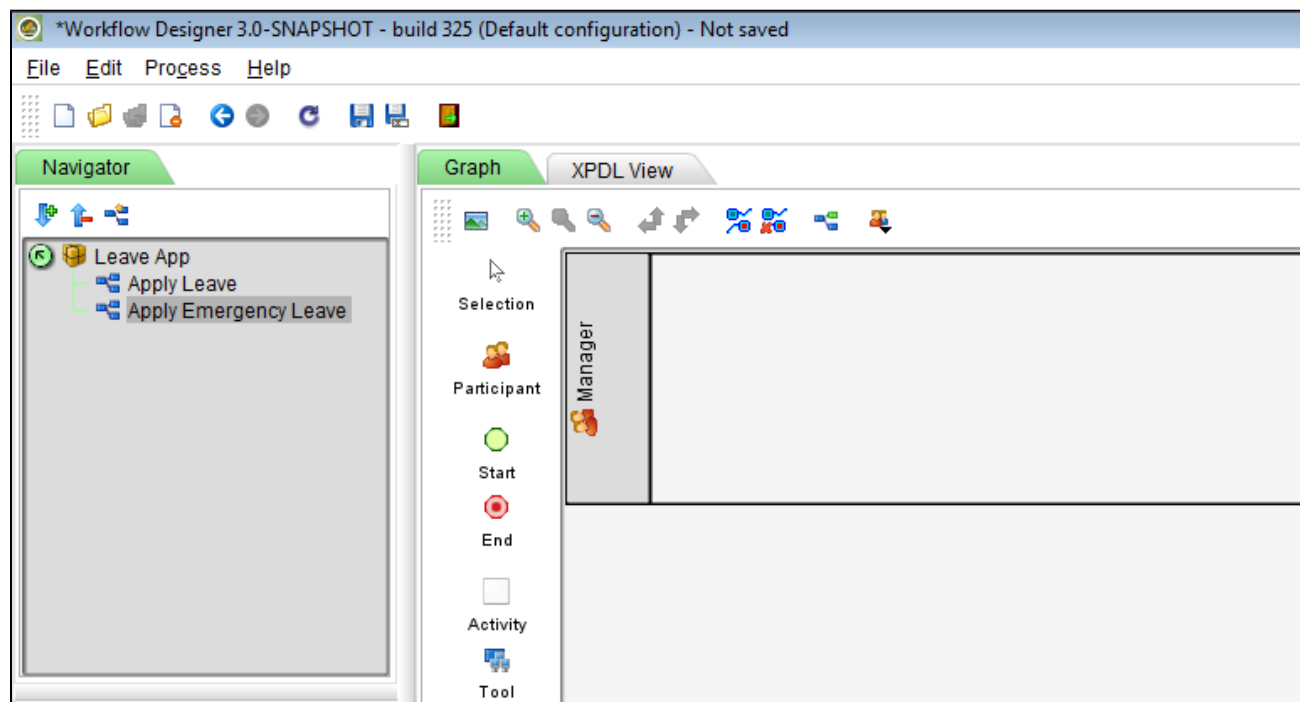


Figure 3: Existing Participant Inserted Into the New Process Design