

JasperReports Reporting Integration Userview Menu

Introduction

JasperReports Userview Menu is a userview plugin that allows more complex reporting requirements through integration with JasperReports. By using JasperReports report definitions, sophisticated reports with custom layouts and graphs can be generated and viewed directly within a userview, with optional export to PDF and Excel.

NOTE: This feature is not meant to be a replacement for full-function reporting servers like JasperReport Server (<http://community.jaspersoft.com/project/jasperreports-server>). However, in many cases you do not need such advanced reporting features, and this plugin allows for easy embedding of sophisticated reports directly within a userview.

What is JasperReports?

JasperReports is one of the most popular open source reporting engines. It is written in Java to be cross-platform, and it is able to use data coming from any kind of data source and produce pixel-perfect documents that can be viewed, printed or exported in a variety of document formats including HTML, PDF, Excel, OpenOffice and Word.

<http://community.jaspersoft.com/project/jasperreports-library>

What is iReport Designer?

iReport is a powerful graphical design tool for report designers and power users to define reports for execution using the JasperReports engine.

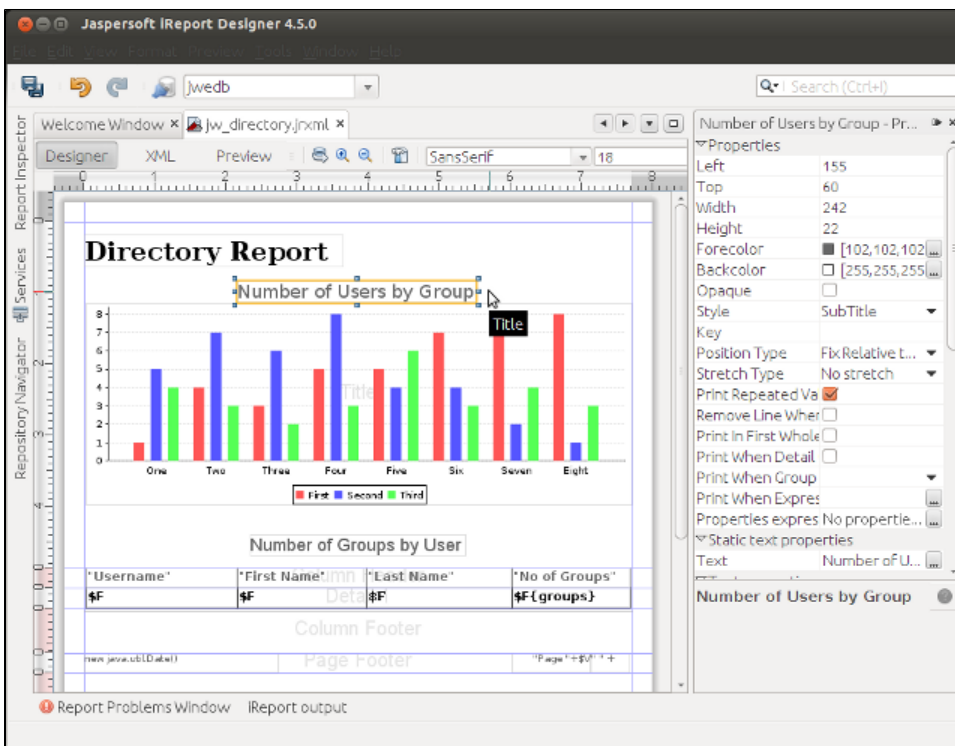
<http://community.jaspersoft.com/project/ireport-designer>

There are community and enterprise versions for both JasperReports and iReport Designer, depending on your needs.

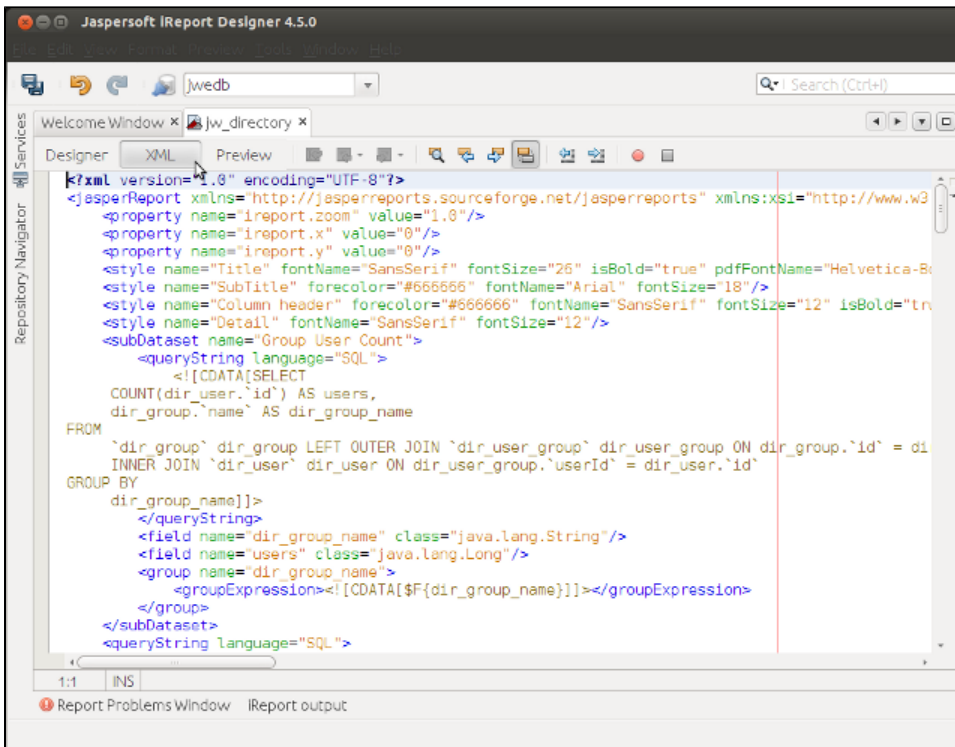
How to Use the JasperReports Userview Menu

1. Design Report Using the iReport Designer

1. Download and install iReport Designer from <http://community.jaspersoft.com/project/ireport-designer>.
2. Get started with iReport Designer to design your report. Documentation on getting started is available at <http://community.jaspersoft.com/wiki/getting-started-ireport-designer>.

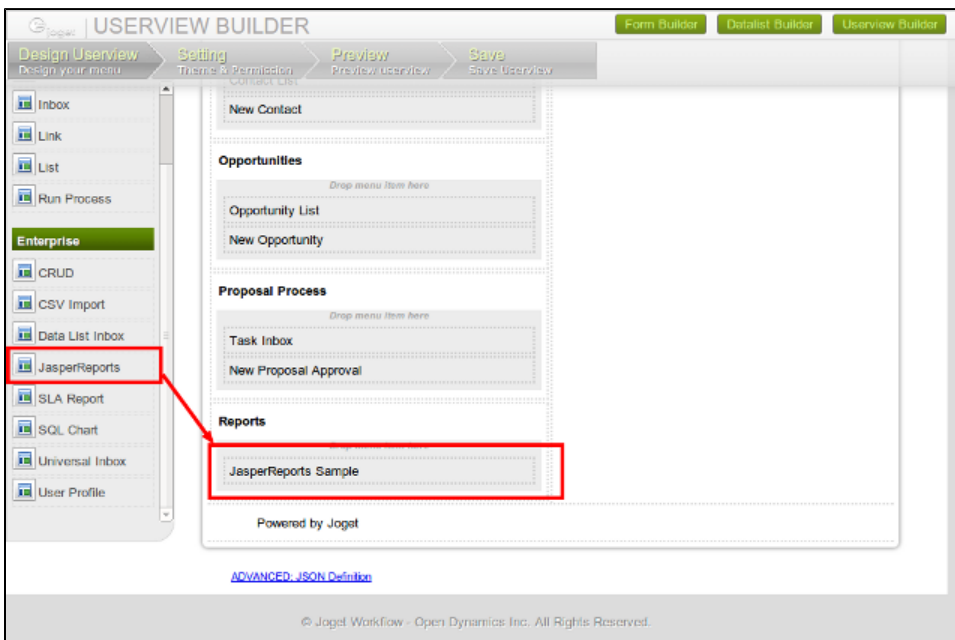


- Once the report has been designed, switch to XML View to view the source XML definition. Copy the XML. You can also save the report as a .jxml file and open the file to copy the contents.



2. Add the JasperReports Menu in the Userview

- In the Jogit Workflow web console, launch the Userview Builder for the desired userview in your app.
- Drag the JasperReports Menu element into the desired menu location in the userview.



3. Configure the JasperReports Menu

Click on Edit and configure the properties in the property dialog, as follows:

Configure Jasper Reports

Configure Jasper Reports > Configure Datasource > Configure Custom Database > UI

Custom ID:

Label:

Default Output:

Export Options: ☒ PDF ☒ Excel

Jasper Reports Definition (JRXML)

```
<?xml version="1.0" encoding="UTF-8"?>
<jasperReport xmlns="http://jasperreports.sourceforge.net/jasperreports"
xmlns:xsi="http://www.w3.org/2001/XMLSchema-instance"
xsi:schemaLocation="http://jasperreports.sourceforge.net/jasperreports
http://jasperreports.sourceforge.net/xsd/jasperreport.xsd"
name="jw_directory" language="groovy" pageWidth="595" pageHeight="762"
columnWidth="535" leftMargin="20" rightMargin="20" topMargin="20"
bottomMargin="20">
  <property name="ireport.zoom" value="1.3310000000000004"/>
  <property name="ireport.x" value="0"/>
  <property name="ireport.y" value="36"/>
  <style name="Title" fontName="Arial" fontSize="26" isBold="true"
```

< Prev Next >

OK Cancel

Configure JasperReports

Custom ID	Optional ID to represent this element; otherwise, a system generated ID will be created. (It is recommended that you enter this ID as it will be seen in the userview URL.)
Label	Name displayed in the userview menu
Default Output	Preselected output (Only HTML is available at this time.)
Export Options	Allows the report to be exported to PDF and/or Excel formats when checked
JasperReports Definition (JRXML)	XML definition of the report designed using iReport Designer (Copy the XML from the "XML View" tab in iReport or directly from the .jrxml file contents.)

Configure Datasource

Datasource	The option of either Default Datasource (which uses the current Joget database), or Custom Datasource (which allows you to key in custom database connection details)
------------	---

Configure Custom Database

JDBC Driver	JDBC driver for the desired database
JDBC URL	JDBC connection URL to the desired database
JDBC Username	Database connection username
JDBC Password	Database connection password

UI

Custom Header	Optional custom header content to be displayed at the top of the report
Custom Footer	Optional custom footer content to be displayed at the bottom of the report

Configure Report Parameters

Parameters

Name	Value
id	#requestParam.id#
title	#form.sample.title[{requestParam.id}]#

Parameters allow you to pass in value to your JasperReport's parameter by using [Hash Variables](#).

4. View the JasperReports Menu

Once the configuration has been done, the report will be generated when the Userview menu page is accessed.

CRM: Sales Force Automation

Sales Force Automation

Home

Welcome

Accounts

Account List (2)

New Account

Contacts

Contact List (1)

New Contact

Opportunities

Opportunity List (4)

New Opportunity

Proposal Process

Task Inbox (0)

New Proposal Approval

Reports

JasperReports Sample

Directory Report

Number of Users by Group

Group	Users
CxO	1
InAdmin	2
Managers	6

Number of Groups by User

Username	First Name	Last Name	No of Groups
clark	Clark	Kent	1
david	David	Cain	1
jack	Jack	Drake	1
julia	Julia	Kapoteis	1
rov	Rov	Harzer	1
sasha	Sasha	Bordeaux	2
terry	Terry	Berg	1
tina	Tina	Mooce	1

Monday 11 June 2012

Page 1 of 1

PDF Excel